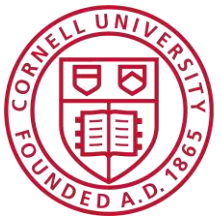


Vet school deja vu: practical repro physiology with emphasis on estrus and synchronization of ovulation

Julio Giordano, DVM, MS, PhD

**Dairy Cattle Biology and Management Laboratory
Department of Animal Science**

Vermont Veterinary Medical Association, Vermont
February 4th, 2023



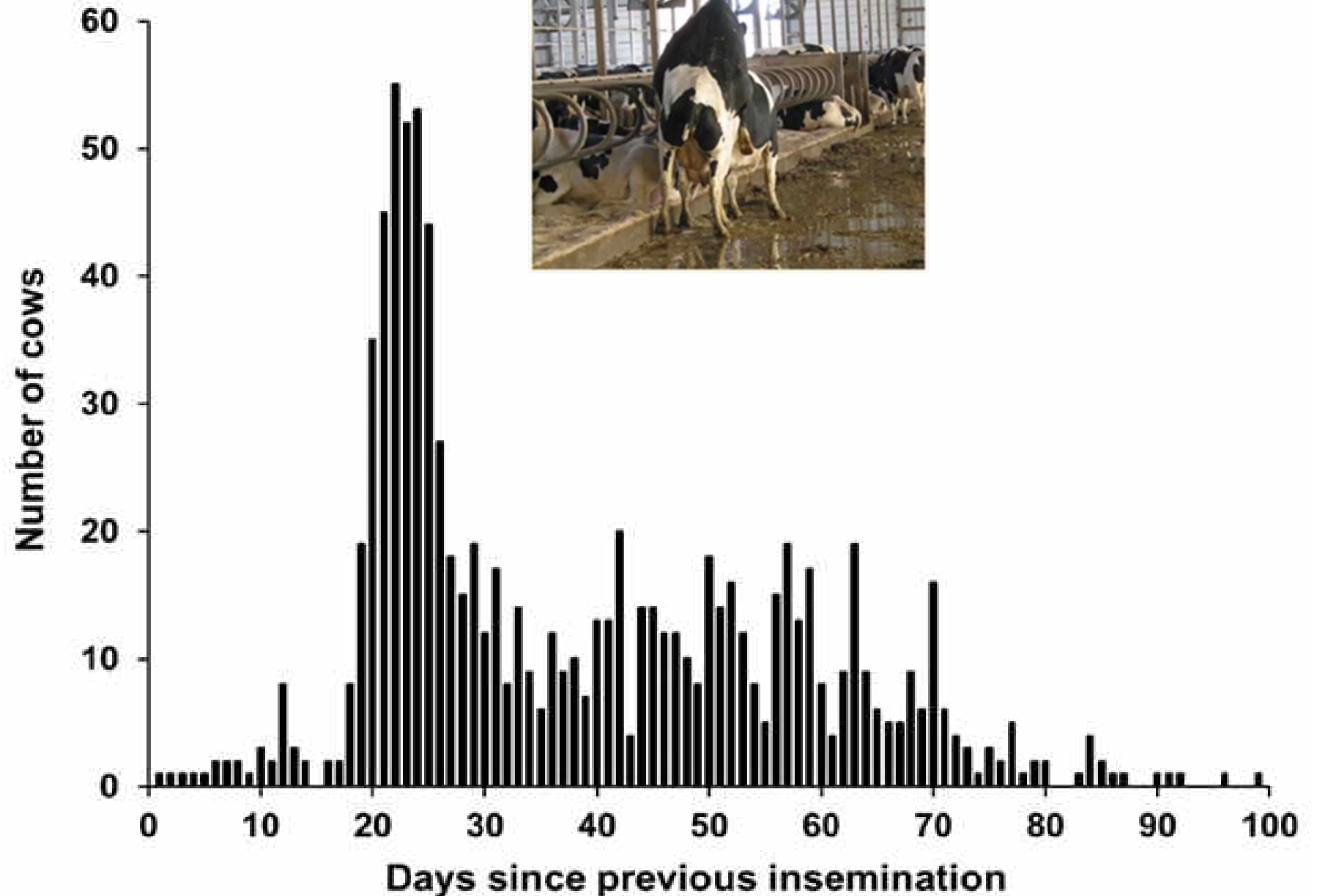
Cornell CALS
College of Agriculture and Life Sciences

Estrus biology has implications for reproductive management

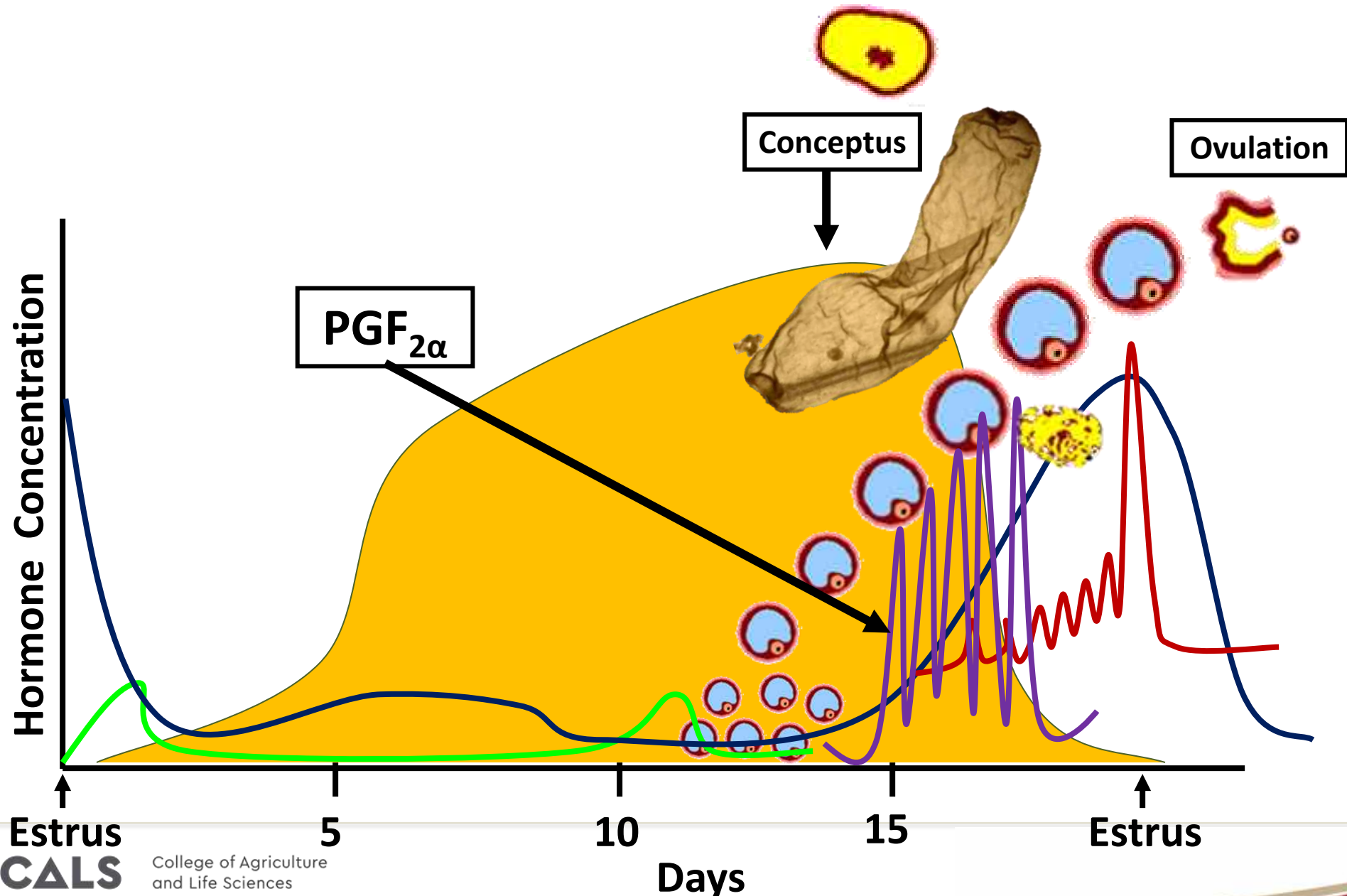
- Effect of early pregnancy loss on expression and detection of estrus
- Expression of estrus during early lactation (VWP) is an indicator of early lactation outcomes and a predictor of reproductive performance
 - Might be used as indicator of good management and predictor for targeted management



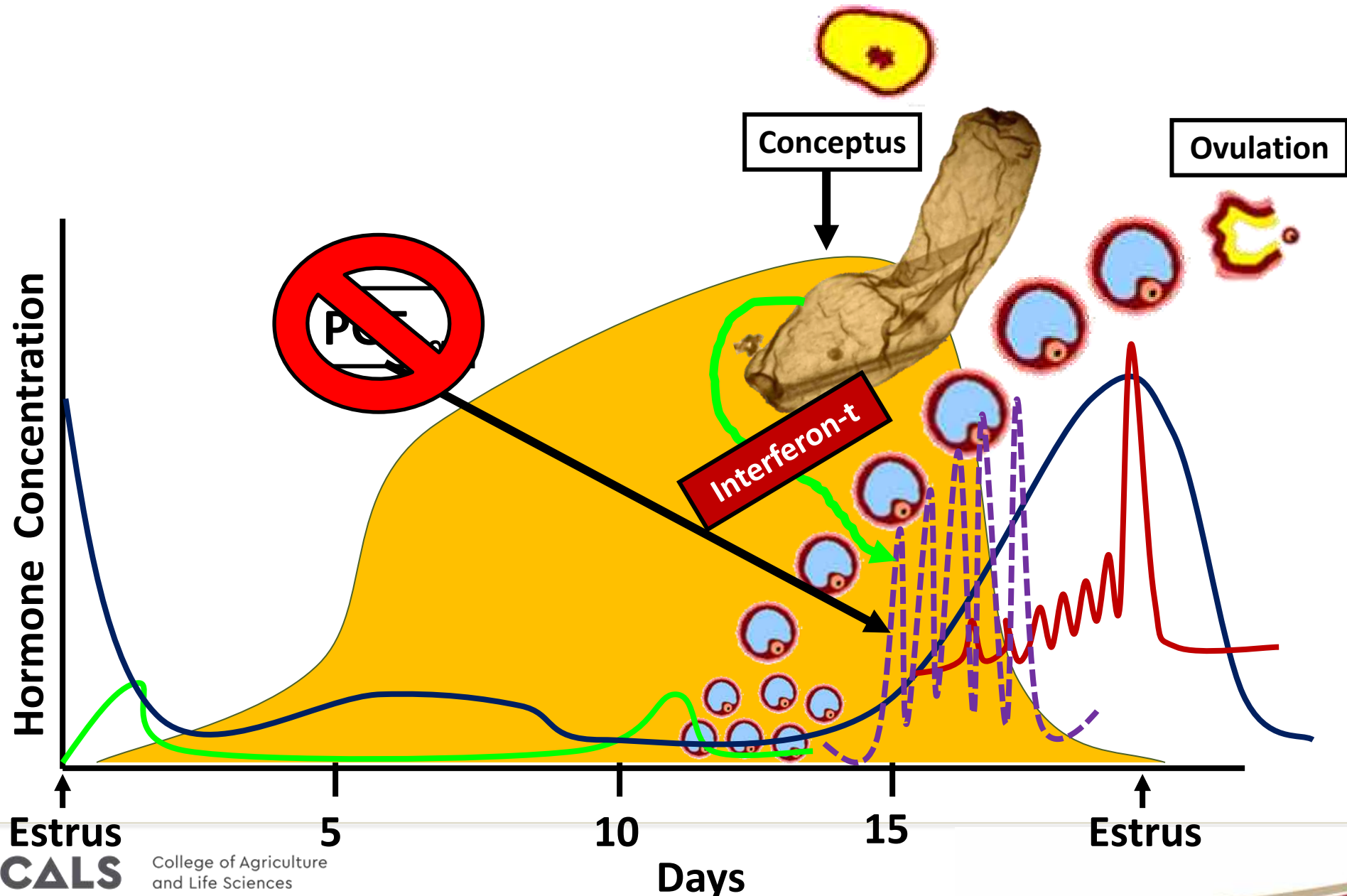
Biological events that occur during pregnancy affect return to estrus



Maternal Recognition of Pregnancy



Maternal Recognition of Pregnancy

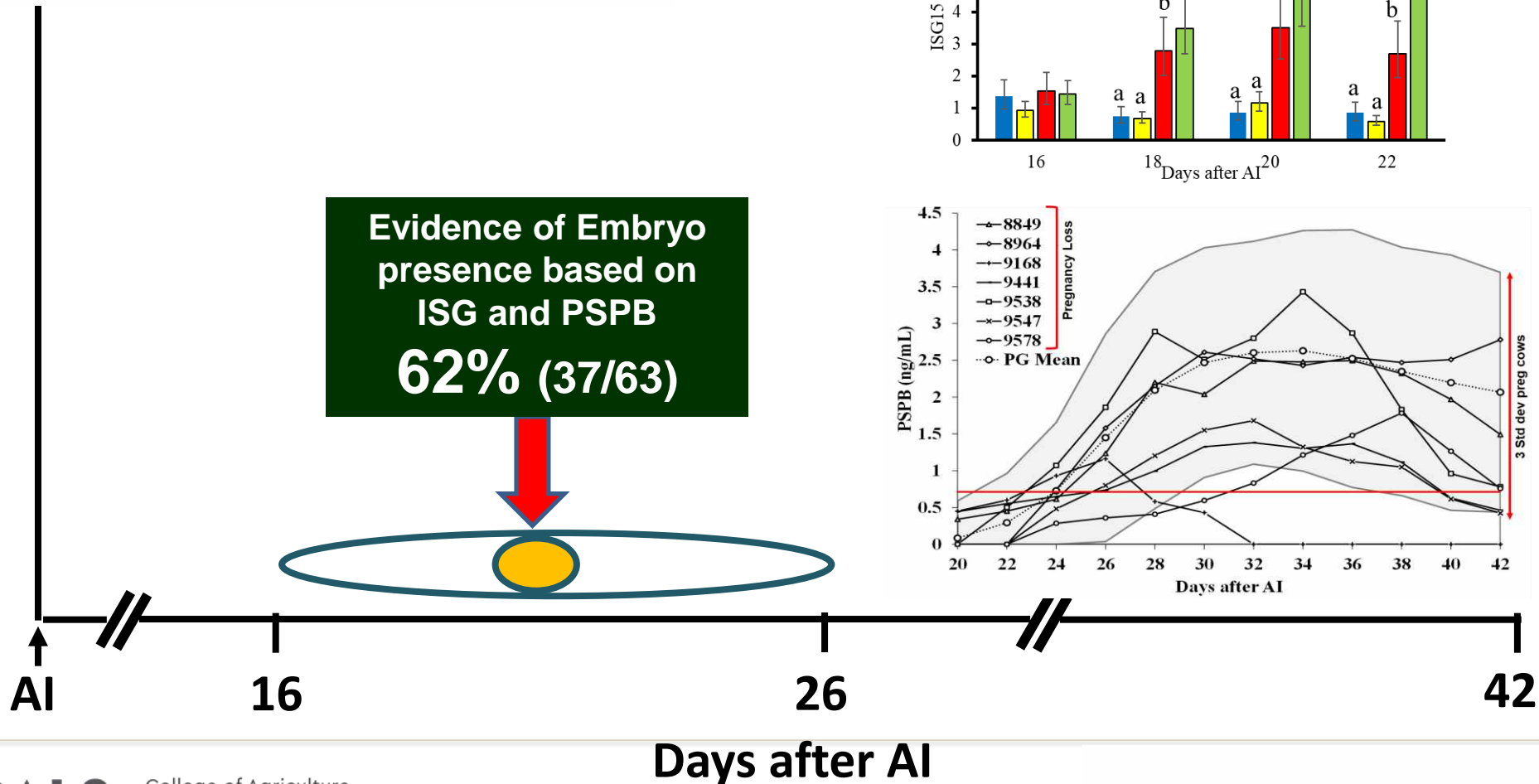


Pregnancy Loss Affects Ovarian Function

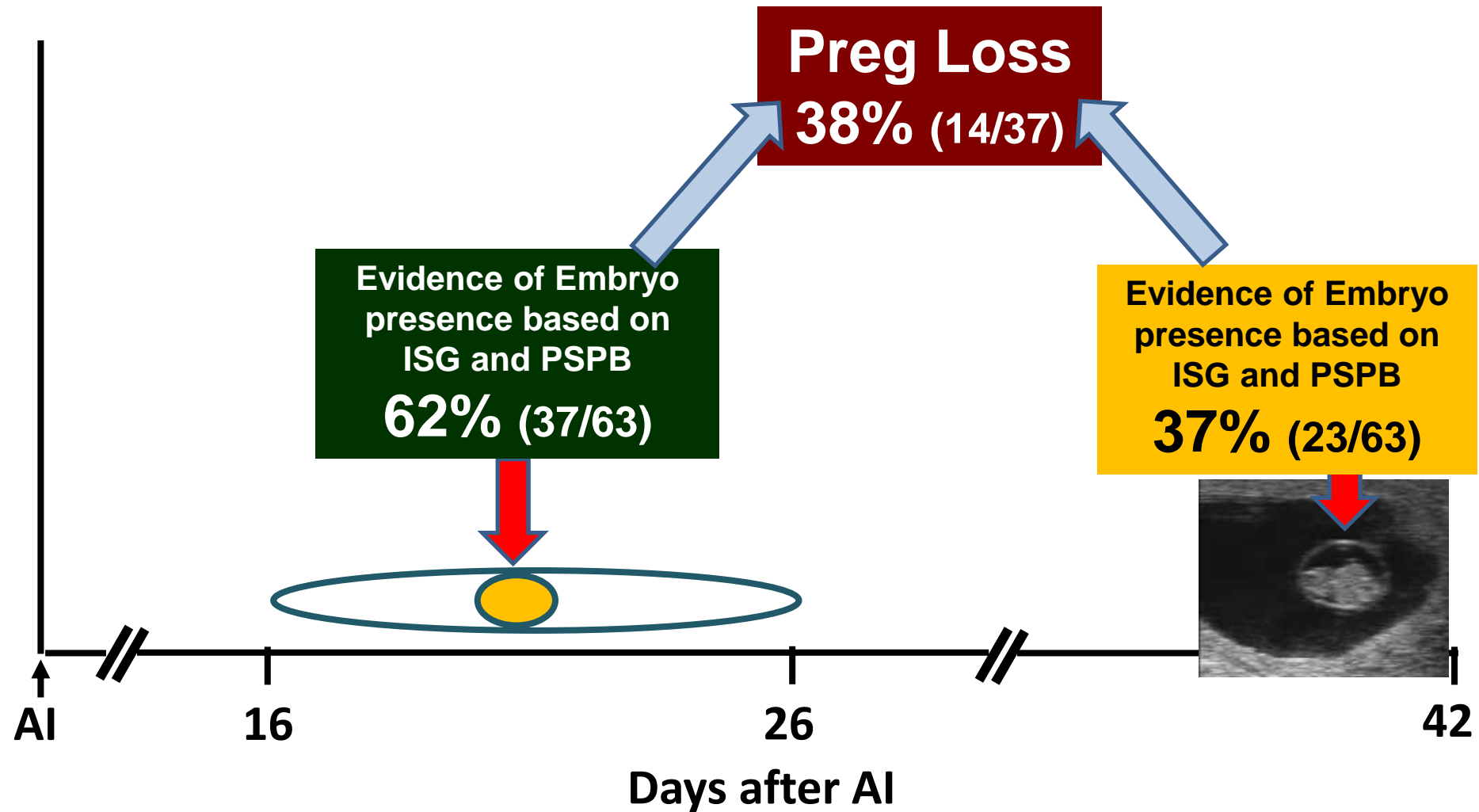
BIOLOGY OF REPRODUCTION (2016) 95(5):112; 1–14
 Published online before print 5 October 2016.
 DOI 10.1095/biolreprod.116.142075

Embryo Mortality Around the Period of Maintenance of the Corpus Luteum Causes Alterations to the Ovarian Function of Lactating Dairy Cows¹

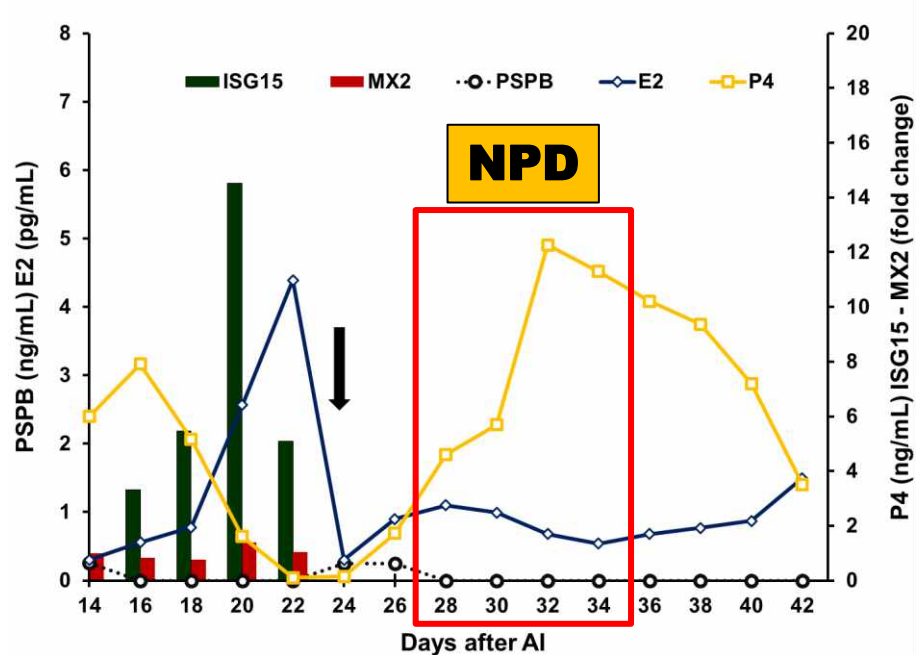
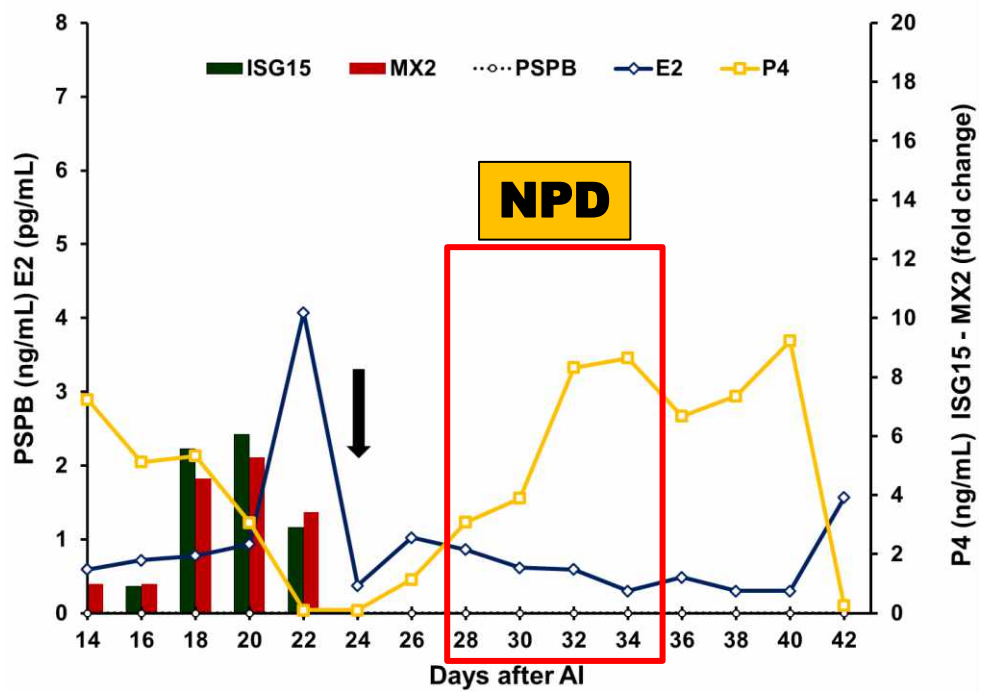
Robert Wijma,³ Matias L. Stangaferro,³ Manasi M. Kamat,⁴ Sreelakshmi Vasudevan,⁴ Troy L. Ott,⁴ and Julio O. Giordano^{2,3}



Pregnancy Loss Affects Ovarian Function

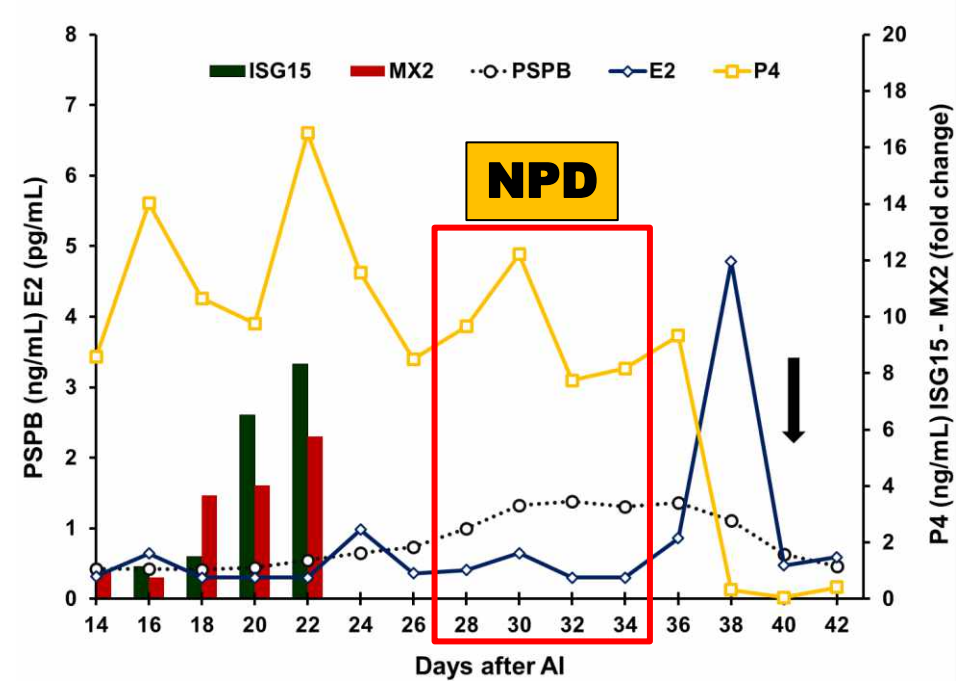
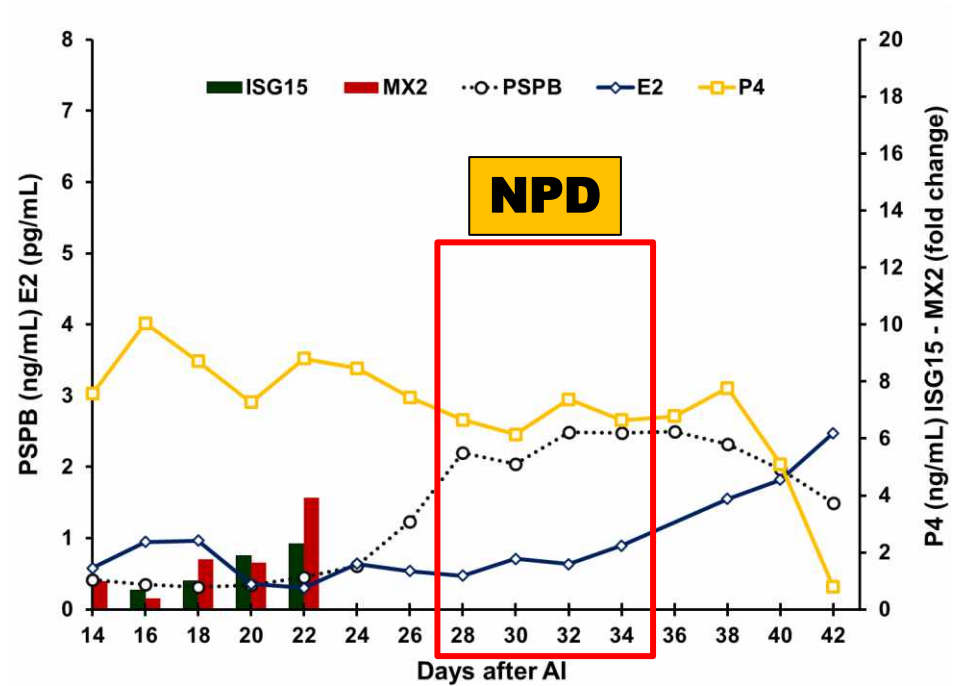


Cows with Early Embryo Mortality (<22 d after AI) return to estrus earlier



Wijma et al., 2016 (BOR 95(5):112)

Cows with Late Embryo Mortality (>22 d after AI) return to estrus later



Wijma et al., 2016 (BOR 95(5):112)

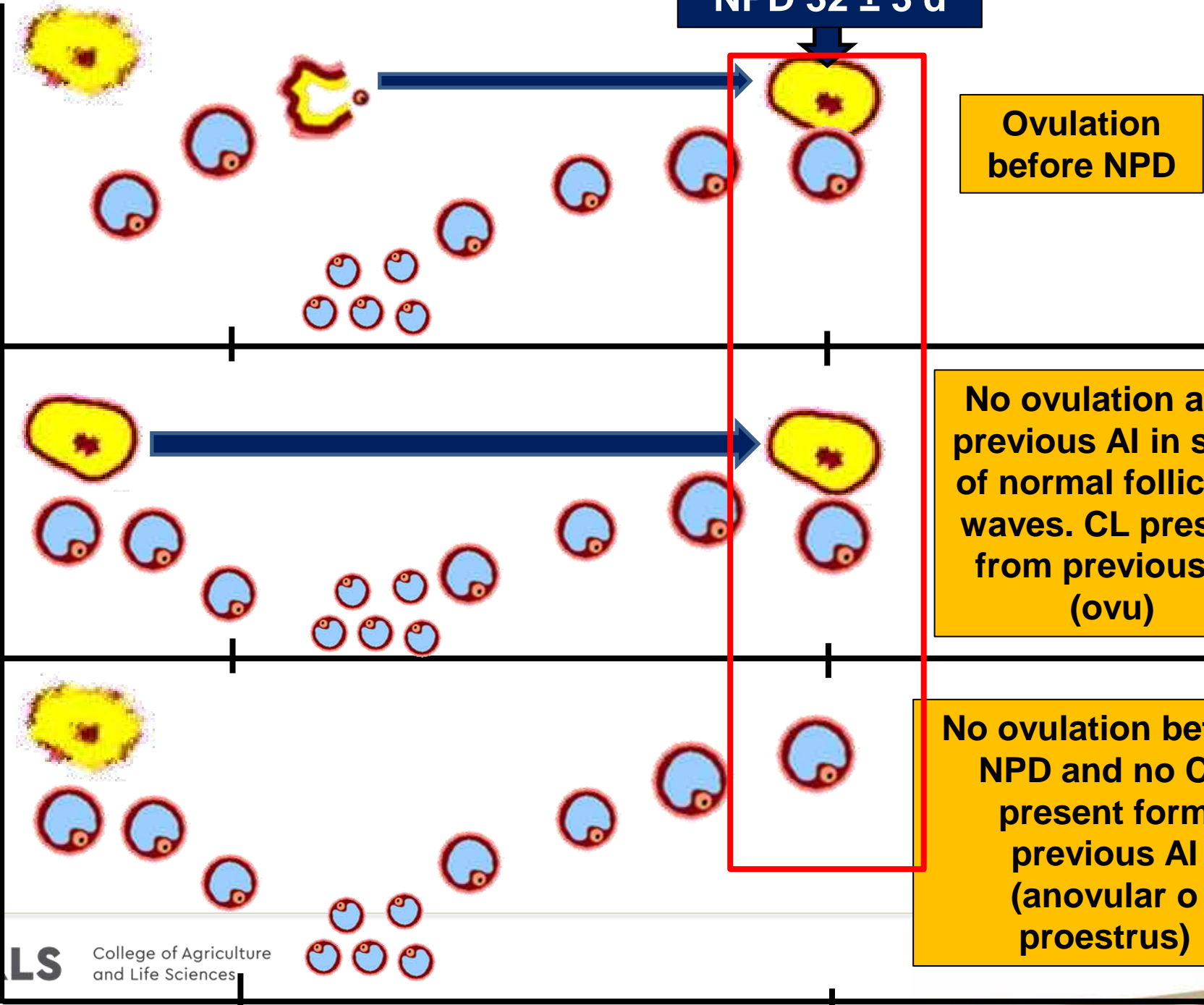
Previous AI

NPD 32 ± 3 d

Ovulation before NPD

No ovulation after previous AI in spite of normal follicular waves. CL present from previous AI (ovu)

No ovulation before NPD and no CL present from previous AI (anovular o proestrus)



Estrus biology has implications for reproductive management

- 🐄 Effect of early pregnancy loss on expression and detection of estrus
- 🐄 Expression of estrus during early lactation (VWP) is an indicator of early lactation outcomes and a predictor of reproductive performance
 - 🐄 Might be used as indicator of good management and predictor for targeted management



Monitored estrus during the VWP with automated estrus alert (AEA) system

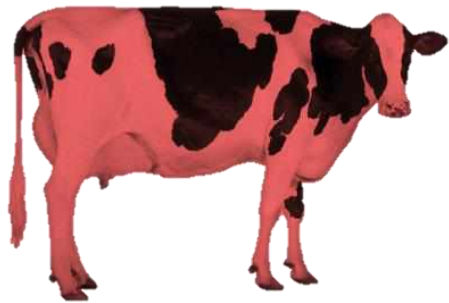
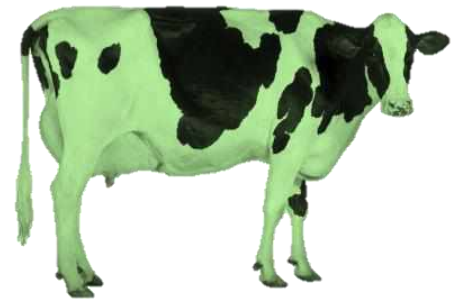


AEA = automated estrus alert



ESTRUS before 50 DIM (VWP)
54.2% (705/1,300)

NO ESTRUS before 50 DIM (VWP)
45.7% (595/1,300)



Cows with AEA during VWP more likely to be AIE, conceive at 1st AI, and be preg. at 150 DIM



AEA = automated estrus alert



21 DIM 49



	GROUP		% points diff.	P-value
	E-VWP	NOE-VWP		
Cows AIE, %	84.9 (416/490)	48.5 (197/406)	36.4	<0.01
All P/AI, %	47.7 (331/693)	42.2 (247/585)	5.5	0.02
Preg 150 DIM	84.9 (390/459)	66.7 (320/417)	18.2	<0.01

Monitored cows based on automated estrus alert (AEA) during the VWP



AEA = automated estrus alert

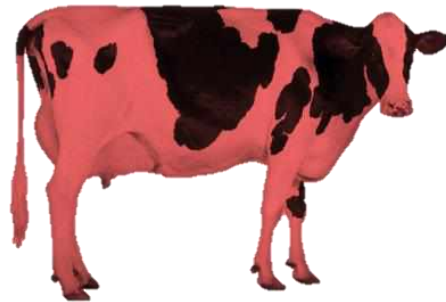


15 DIM

49 DIM

ESTRUS before 50 DIM (VWP)
59.7% (507/849)

NO ESTRUS before 50 DIM (VWP)
40.3% (342/849)



Cows with AEA during VWP more likely to be AIE and had greater P/AI to 1st service



AEA = automated estrus alert



	GROUP		% points diff.	P-value
	E-VWP	NOE-VWP		
Cows AIE, %	87.9 (218/248)	42.5 (68/160)	45.4	<0.01
All P/AI, %	43.1 (107/248)	23.2 (37/160)	19.9	<0.01
Preg 150 DIM	73.8 (107/145)	57.3 (55/96)	16.5	0.02

Proportion of cows with automated estrus alerts (AEA) during the VWP



AEA = automated estrus alert



21 DIM

49 DIM



AEA = automated estrus alert



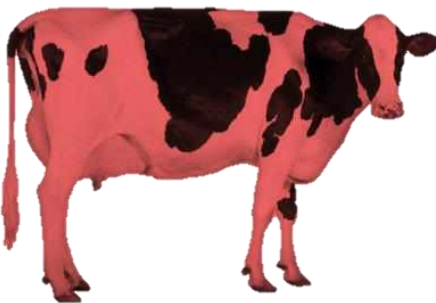
15 DIM

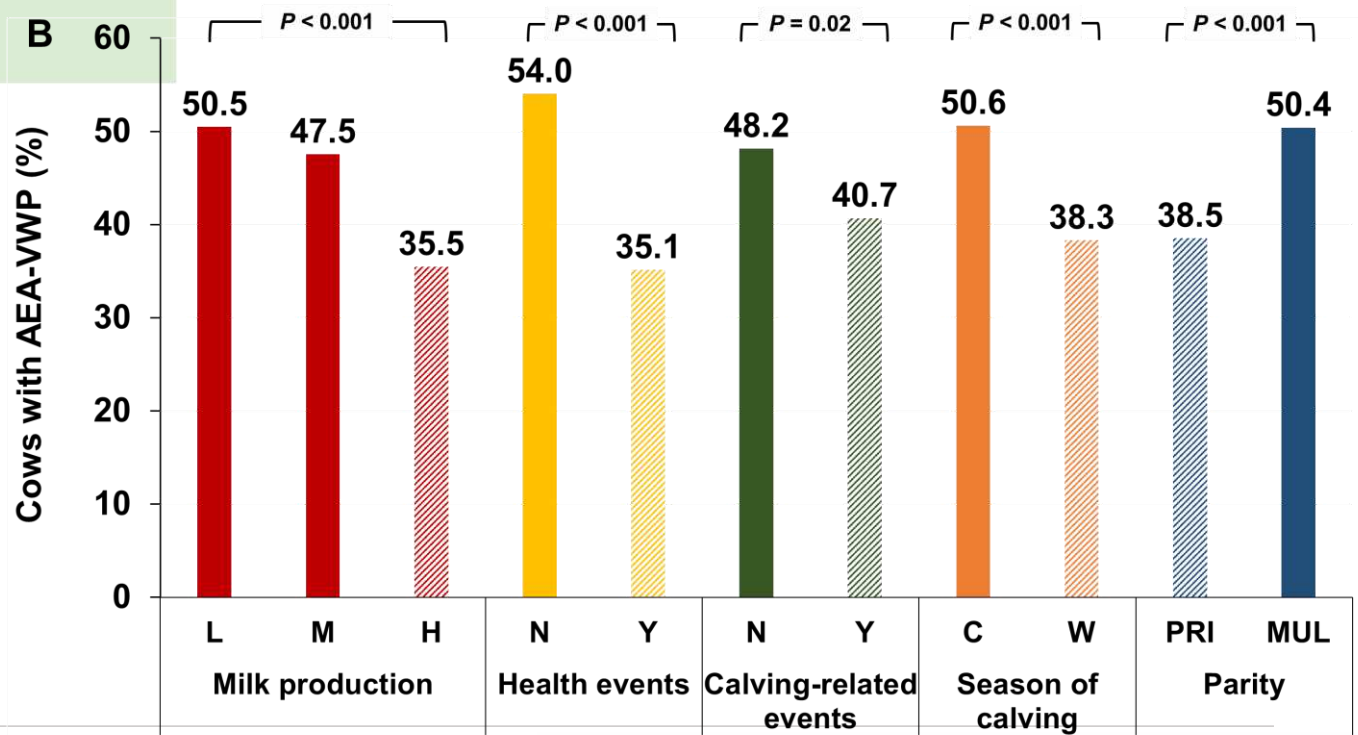
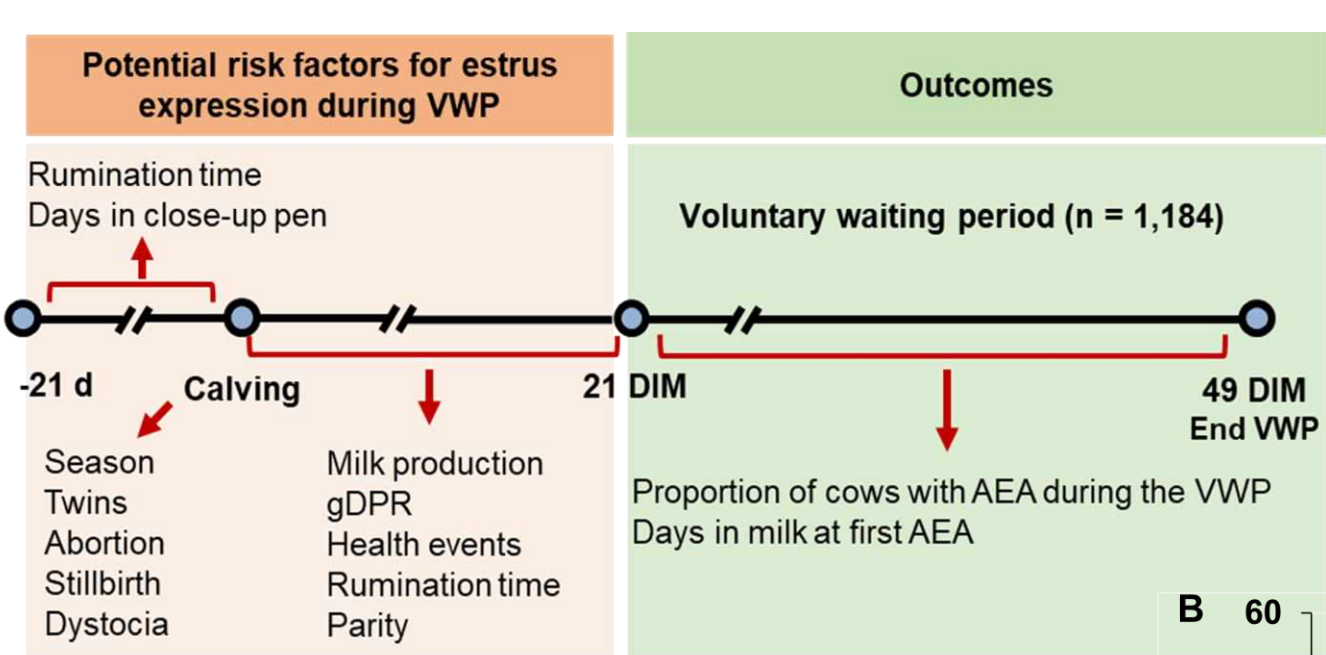
49 DIM

ESTRUS before 50 DIM (VWP)
56.4% (507/2,149)



NO ESTRUS before 50 DIM (VWP)
43.6% (937/2,149)



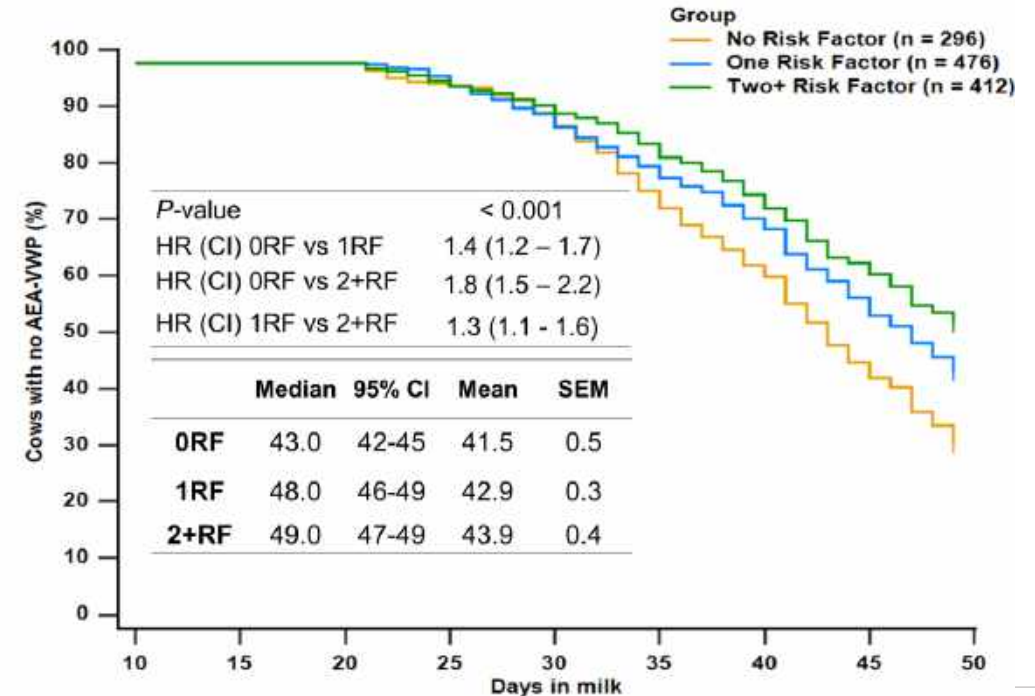
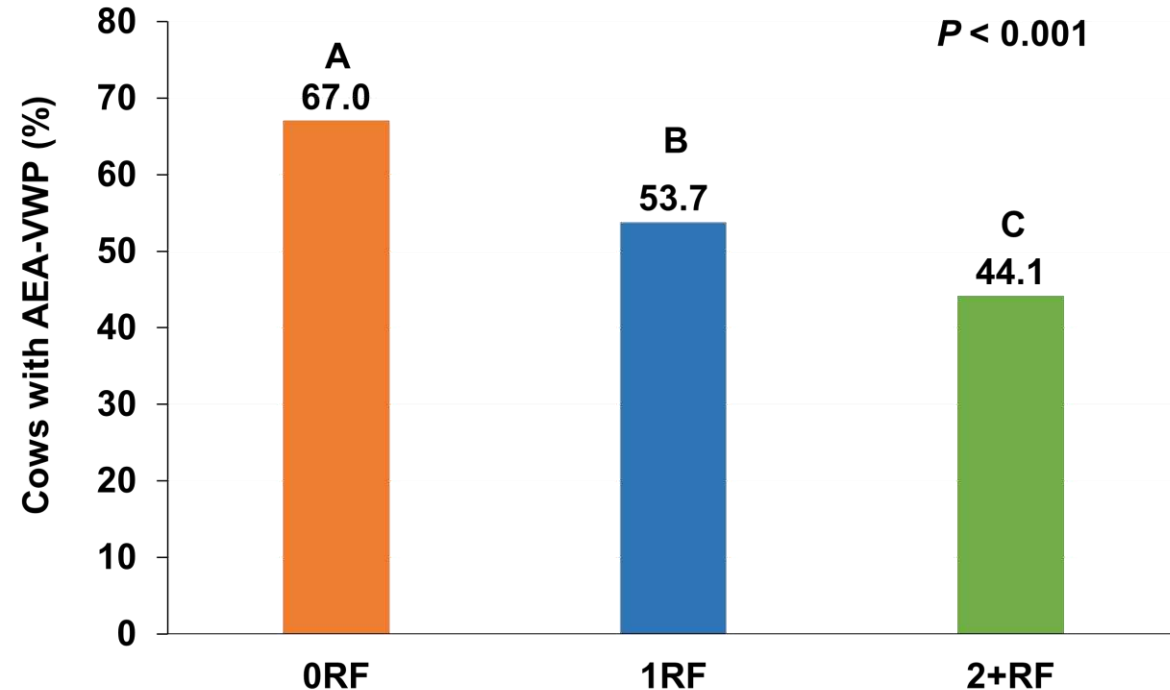


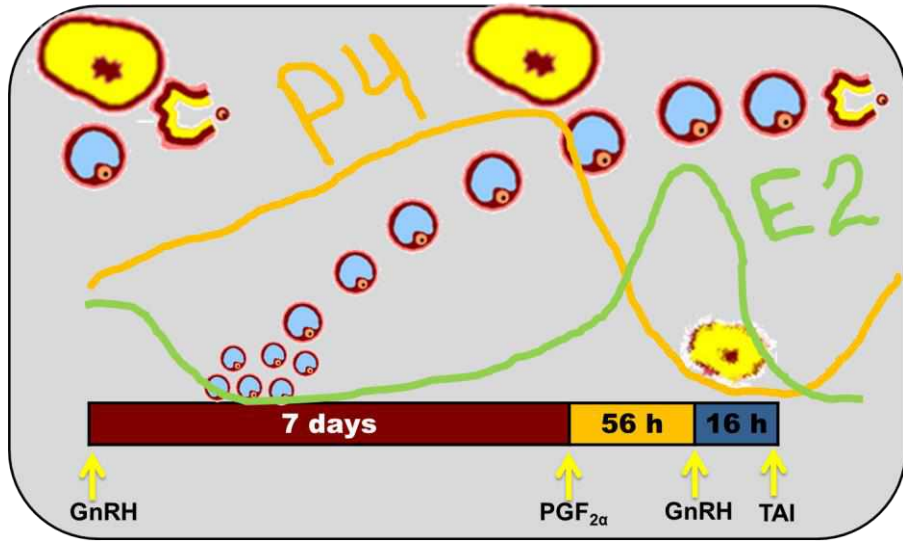
Cows with fewer risk factors were more likely to express estrus and express estrus earlier during the VWP than cow with more risk factors

0RF = 25.0%
(296/1,184)

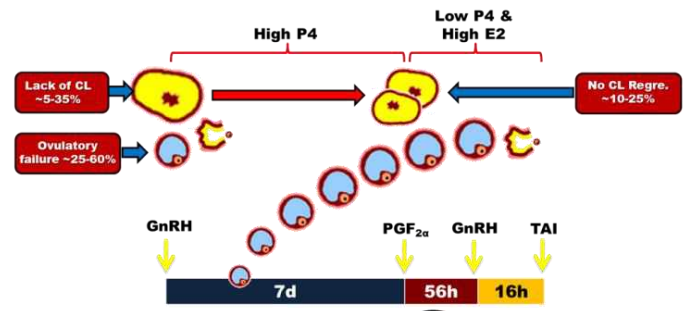
1RF = 40.2%
(476/1,184)

2+RF = 34.8%
(412/1,184)





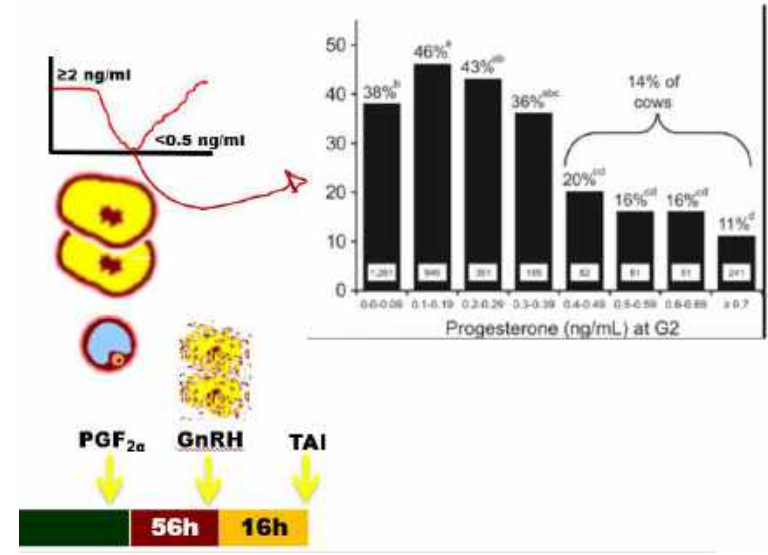
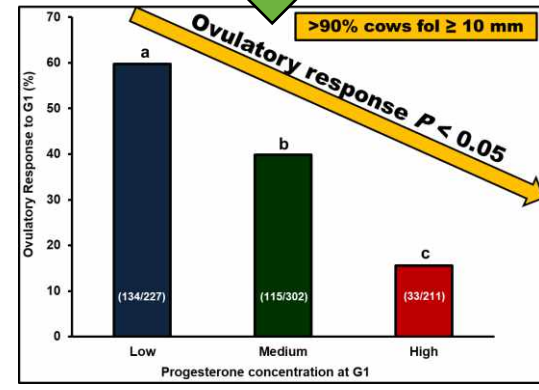
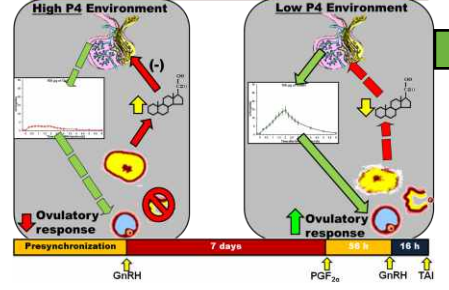
1 High P4 during fol. growth – endogenous vs. exogenous P4



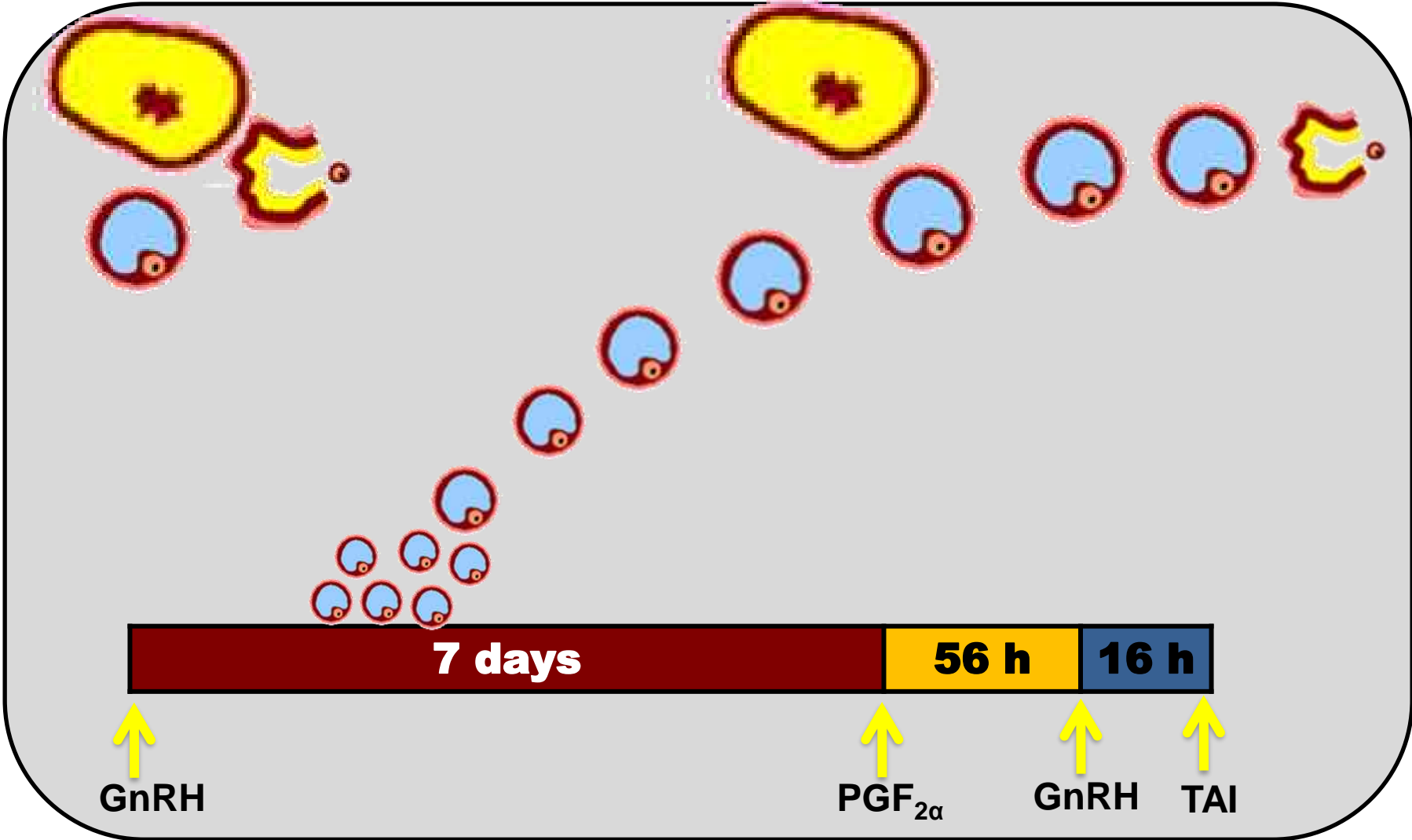
2 Increase response to GnRH 1

3 Increase CL regression rate & minimize P4 levels

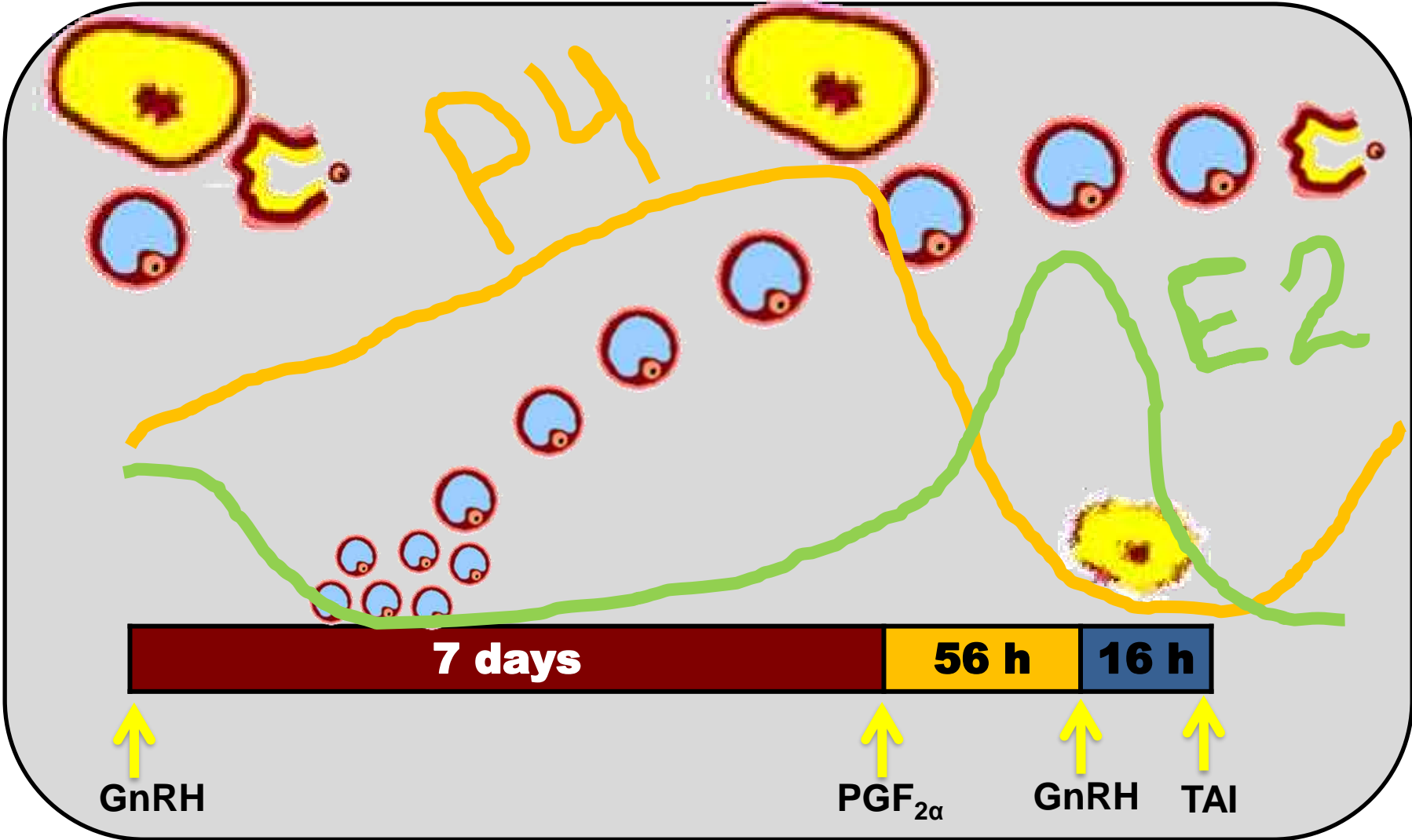
Model of P4 Effect on LH Release



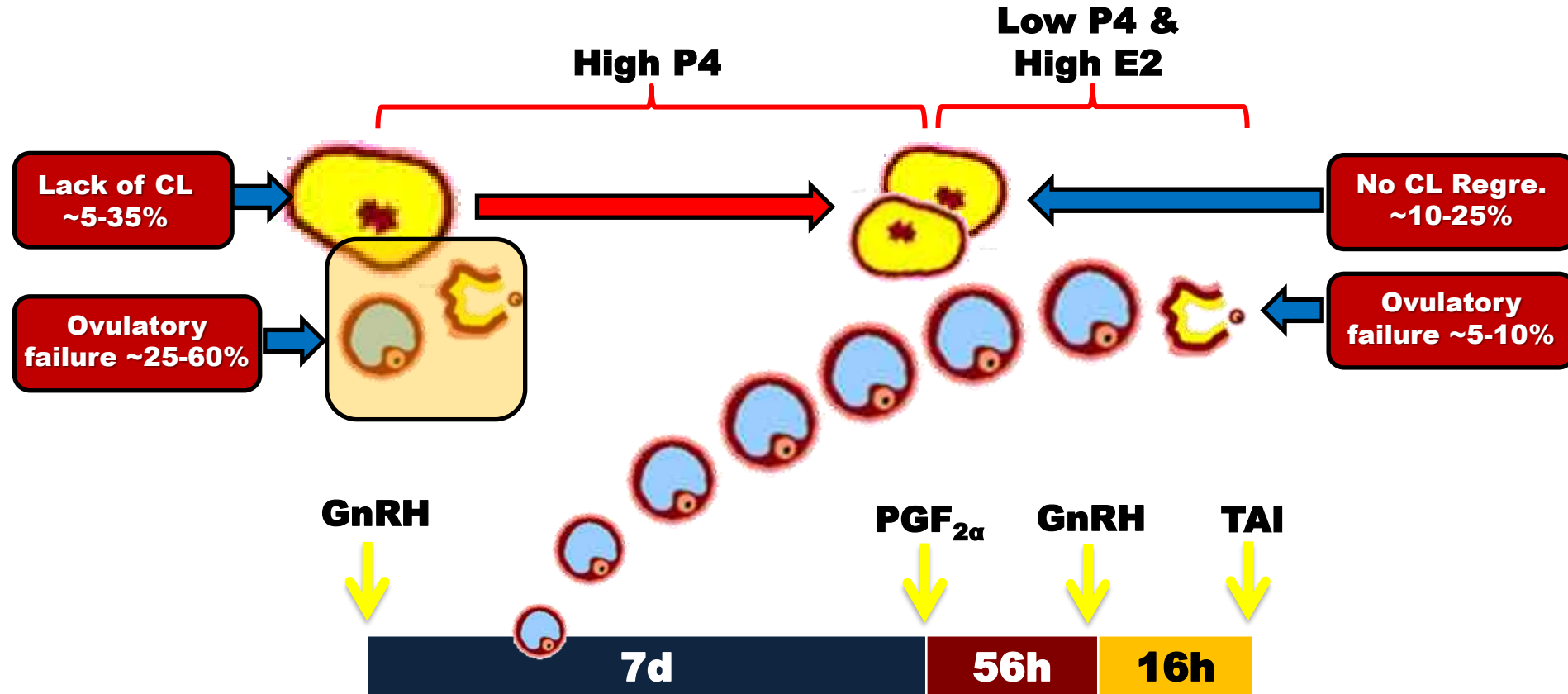
Ovarian Physiology During Ovsynch



Ovarian Physiology During Ovsynch

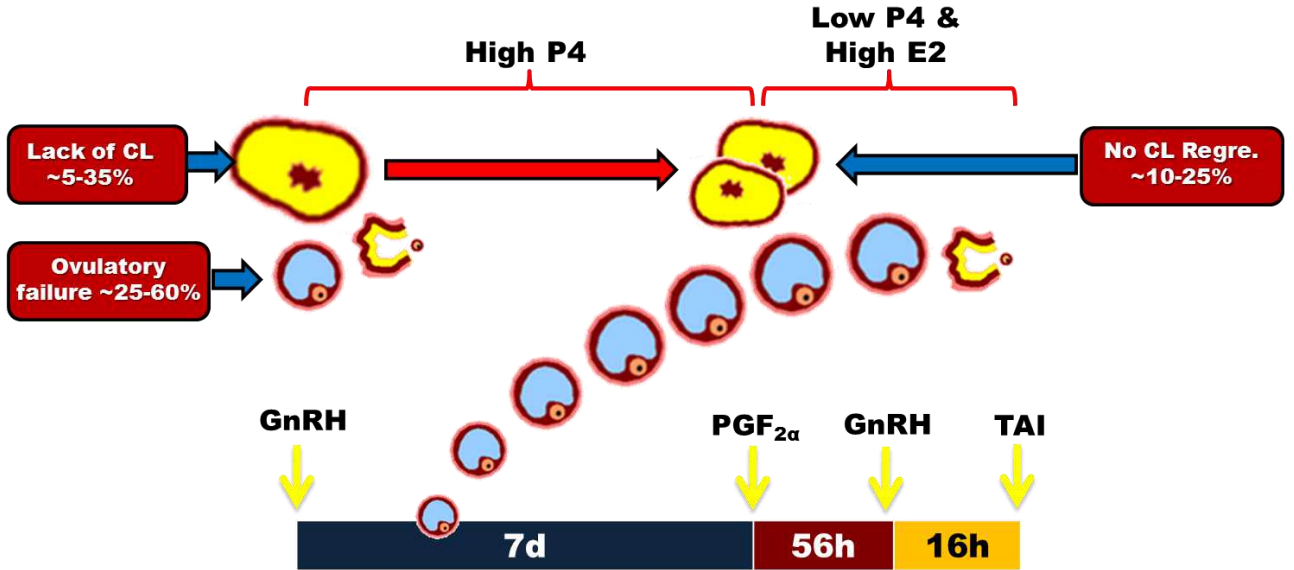


Critical steps and associated issues in synchronization protocols



Strategies for optimizing TAI programs

1 High P4 during fol. growth – endogenous vs. exogenous P4



2 Increase response to GnRH 1

3 Increase CL regression rate & minimize P4 levels

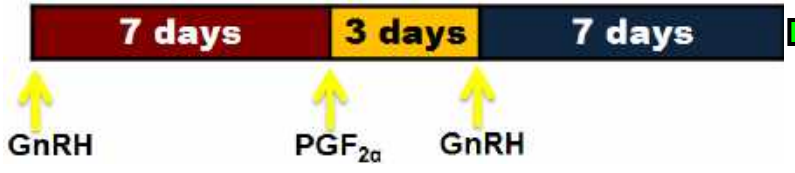
Fertility programs include presynchronization of the estrous cycle to optimize P/AI

1 High P4 during fol. growth – endogenous vs. exogenous P4

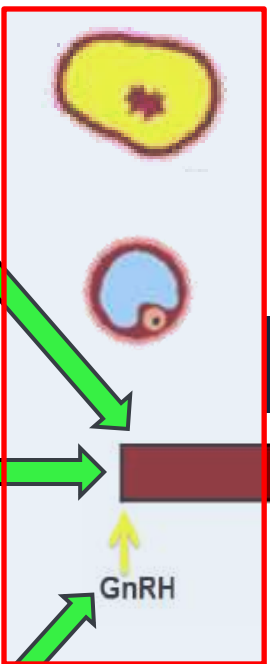
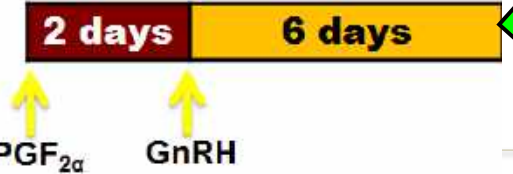
Presynch-Ovsynch (Moreira et al., 2001)



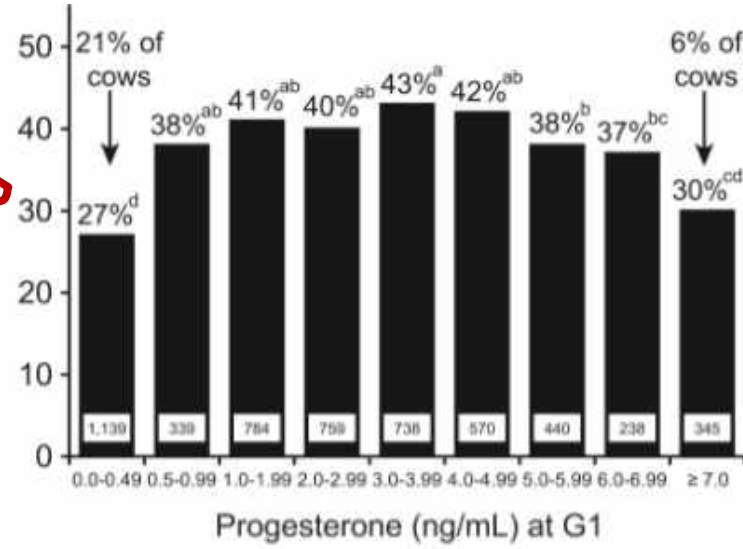
Double-Ovsynch (Souza et al., 2008)



G6G (Bello et al., 2006)

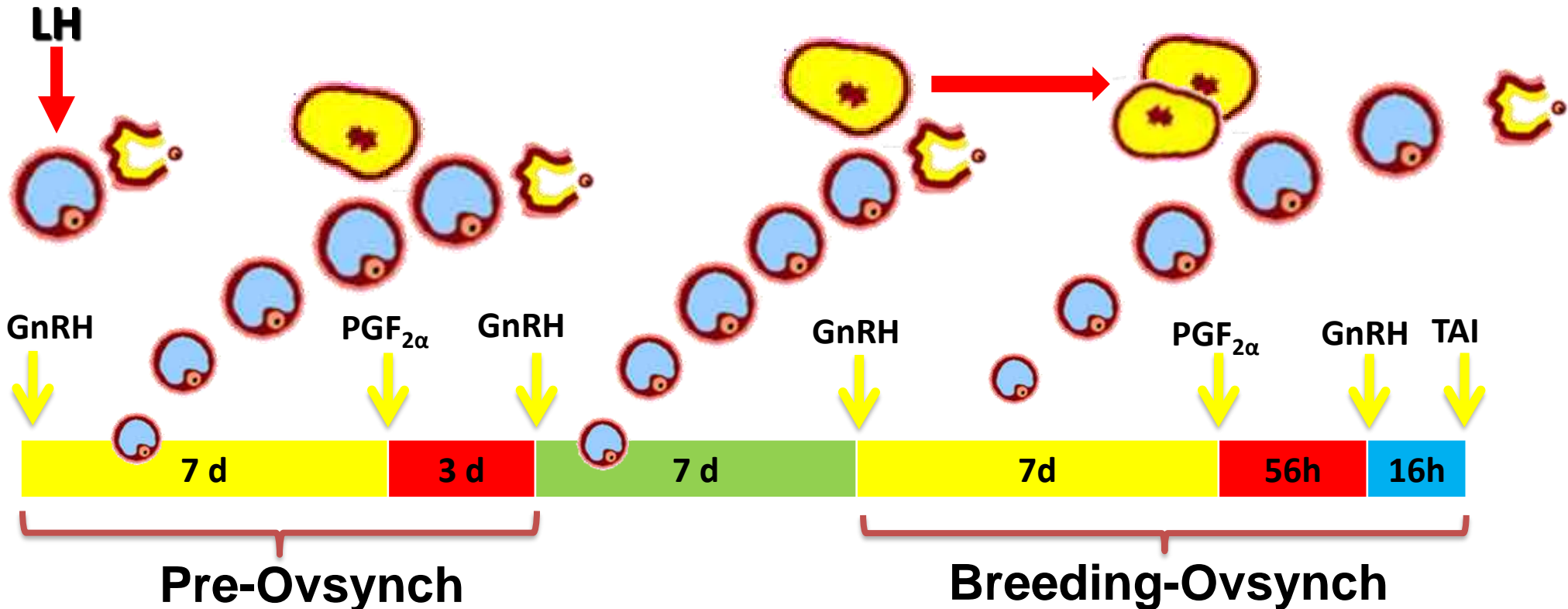


First Service TAI



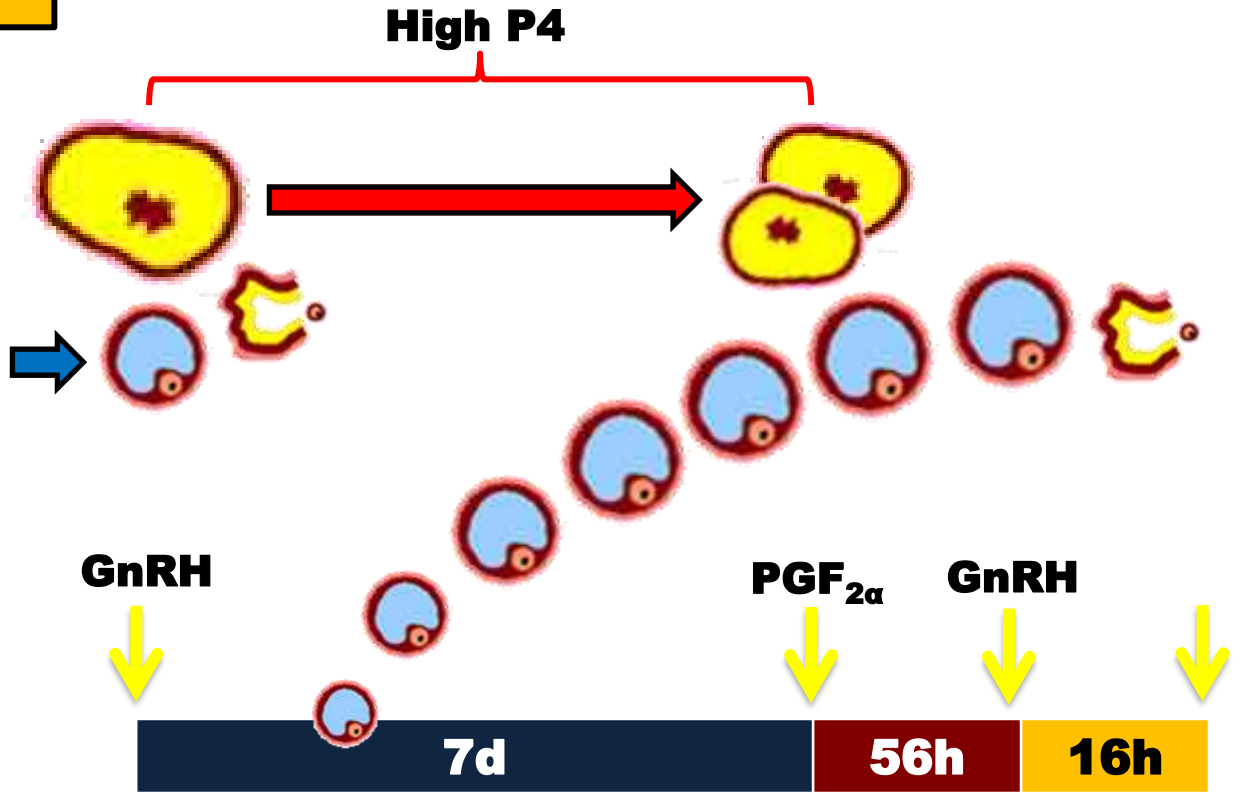
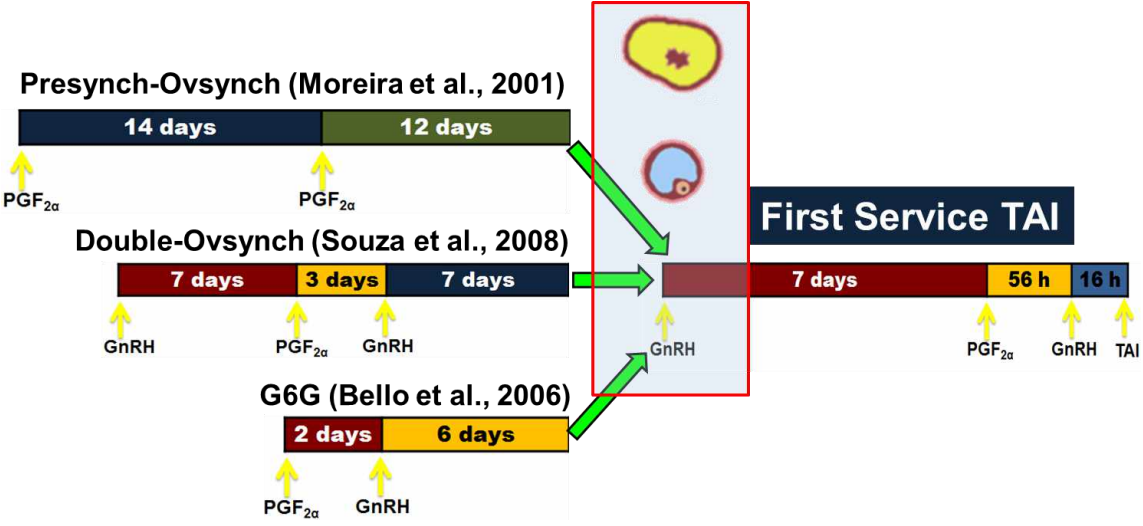
Carvalho et al., 2015

Physiology Double-Ovsynch



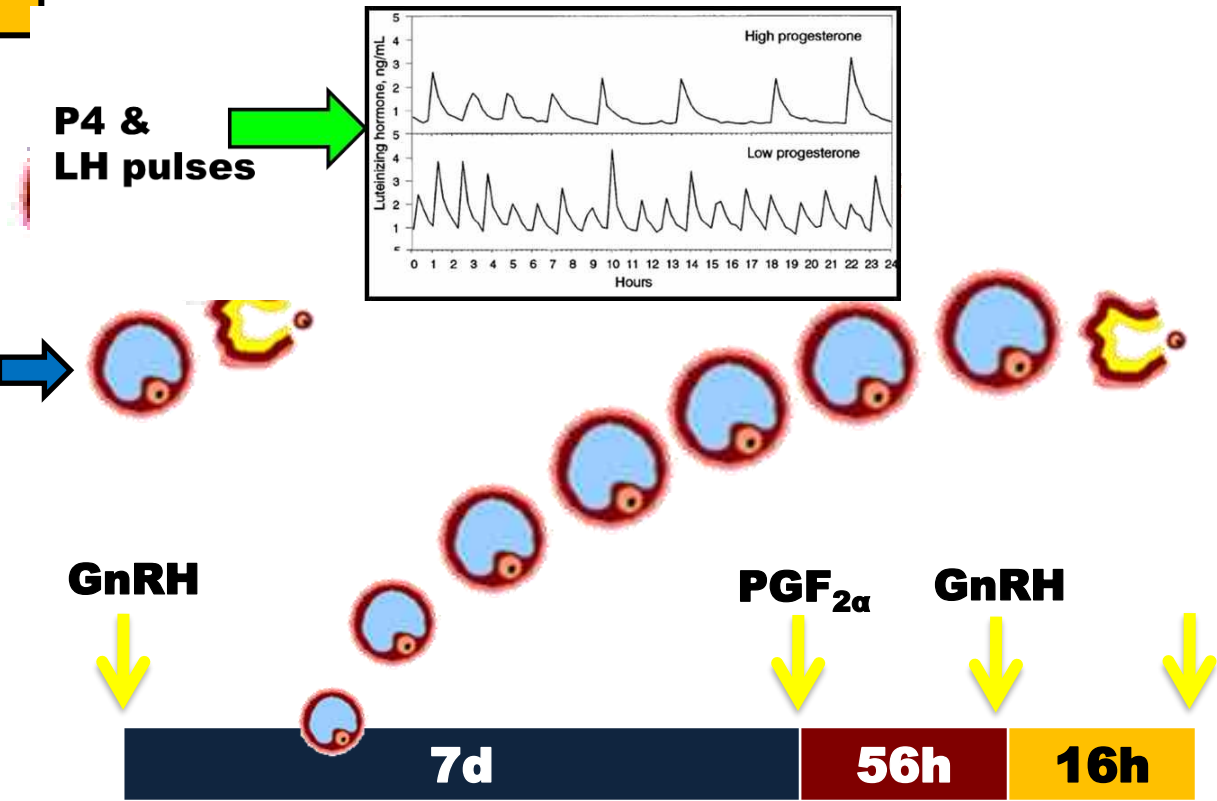
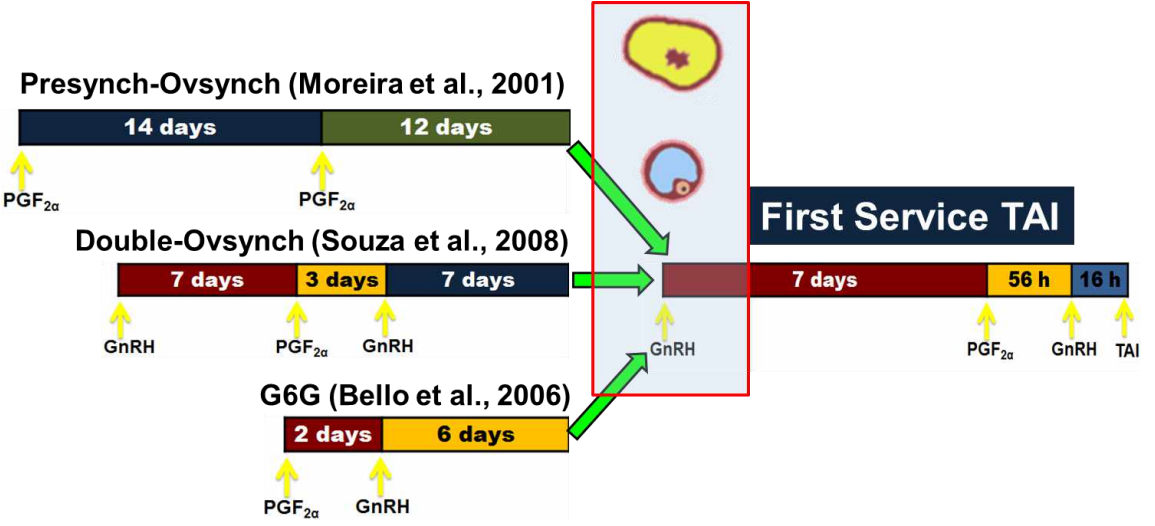
Fertility programs include presynchronization of the estrous cycle to optimize P/AI

1 High P4 during fol. growth – endogenous vs. exogenous P4



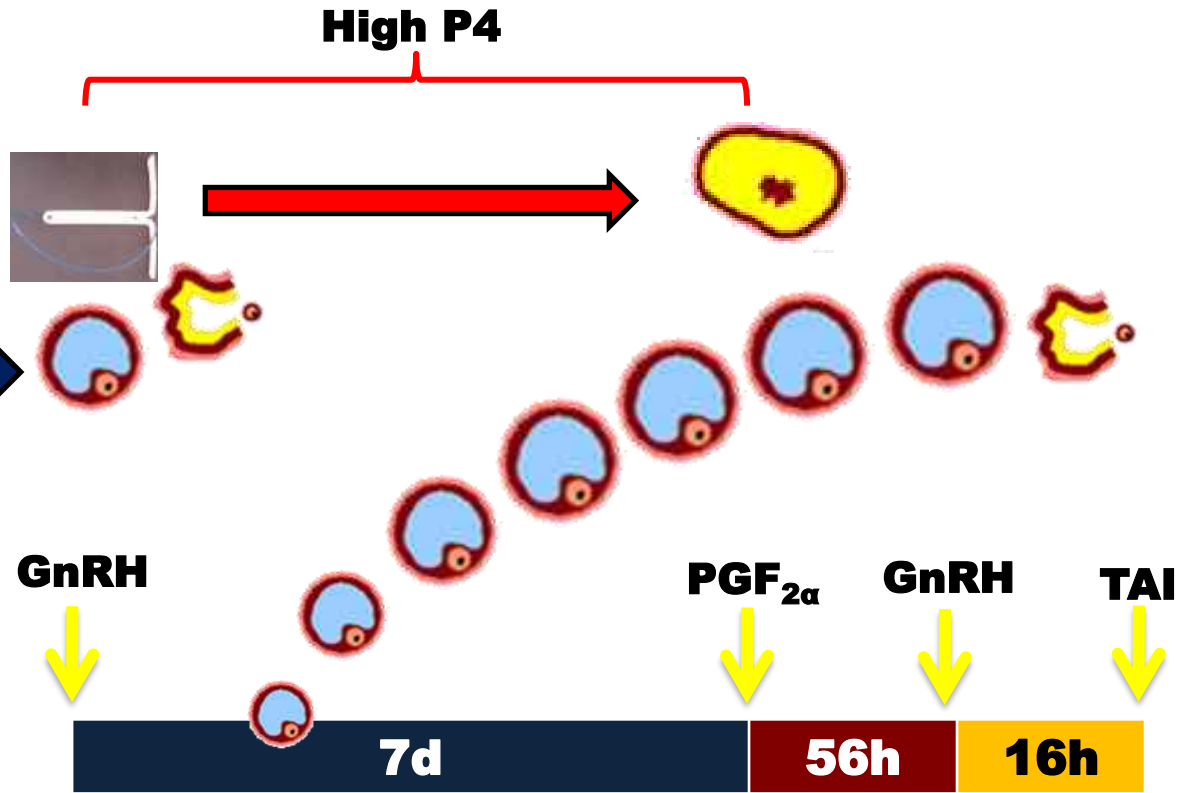
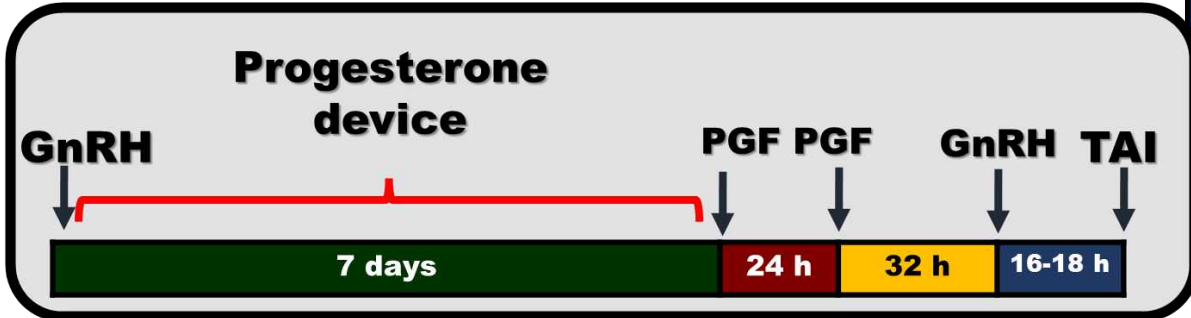
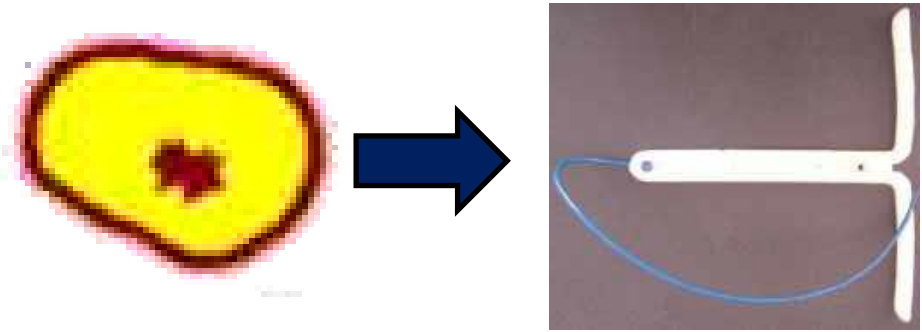
Fertility programs include presynchronization of the estrous cycle to optimize P/AI

1 High P4 during fol. growth – endogenous vs. exogenous P4



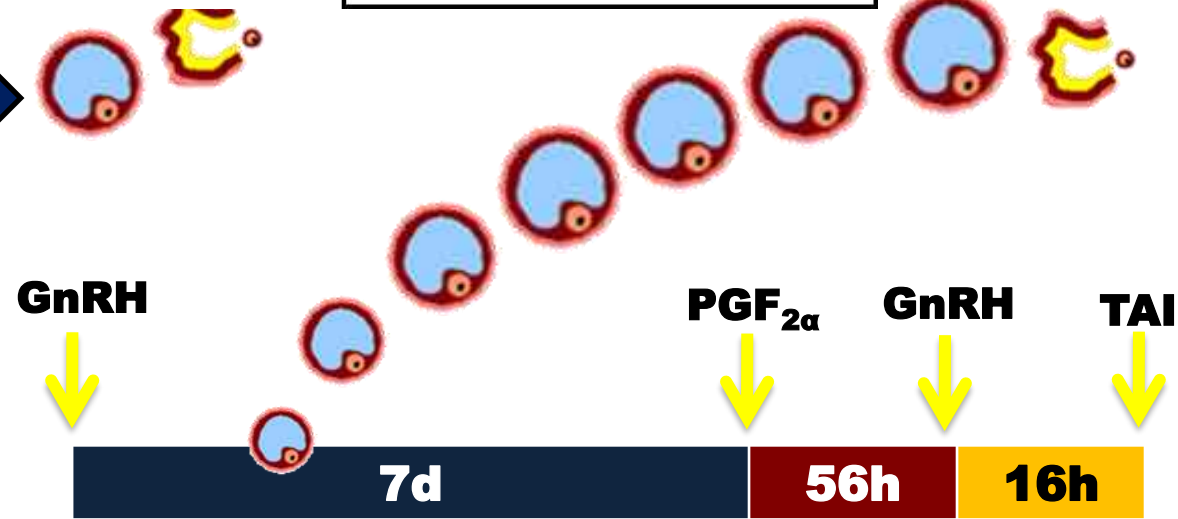
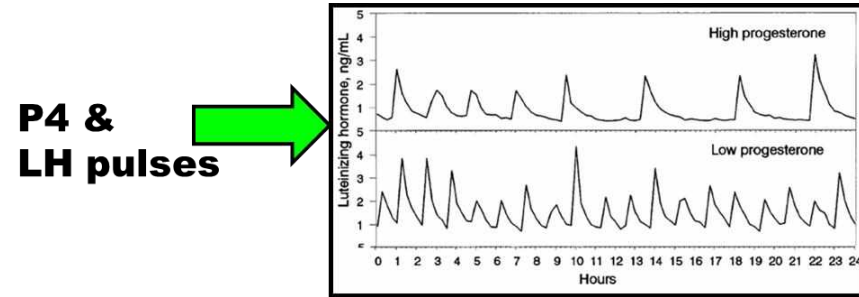
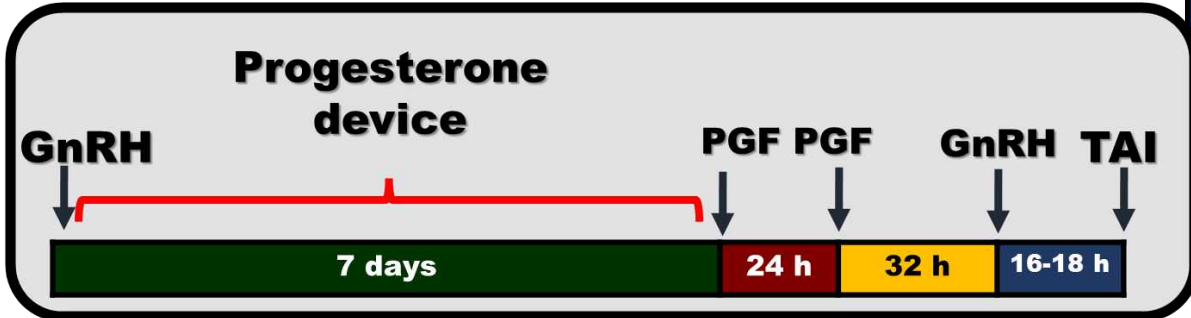
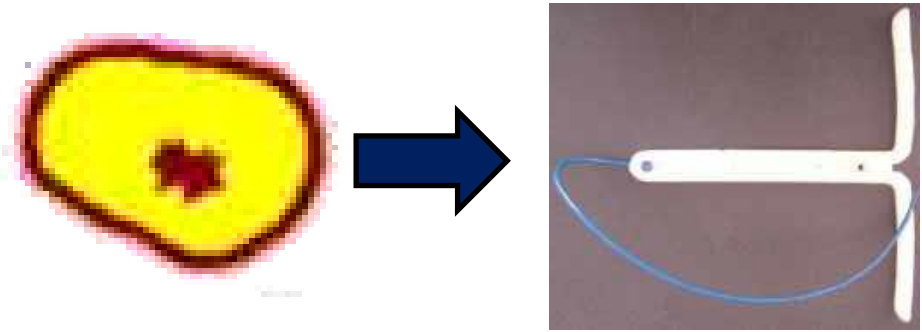
Fertility programs include presynchronization of the estrous cycle to optimize P/AI

1 High P4 during fol. growth – endogenous vs. exogenous P4

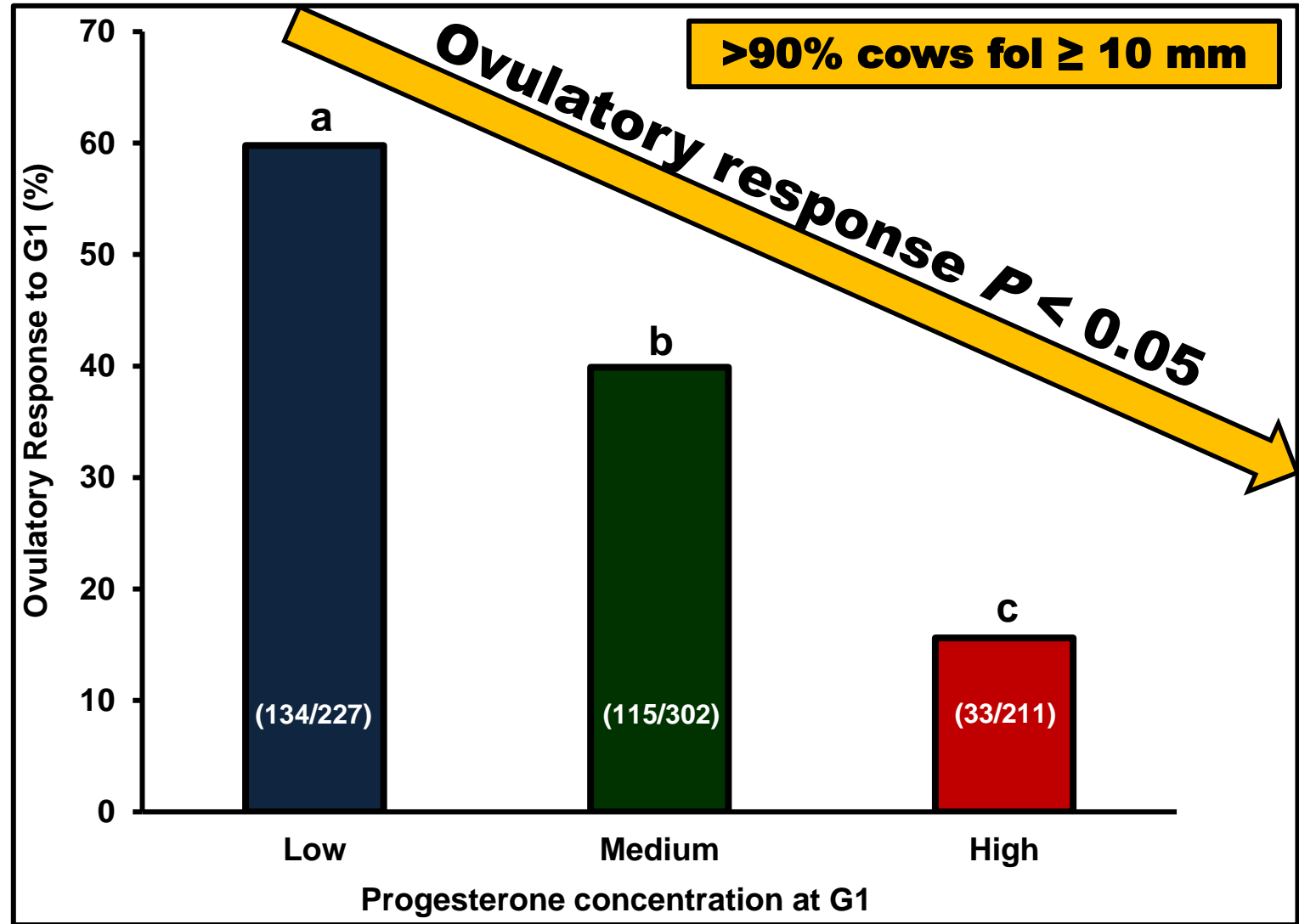
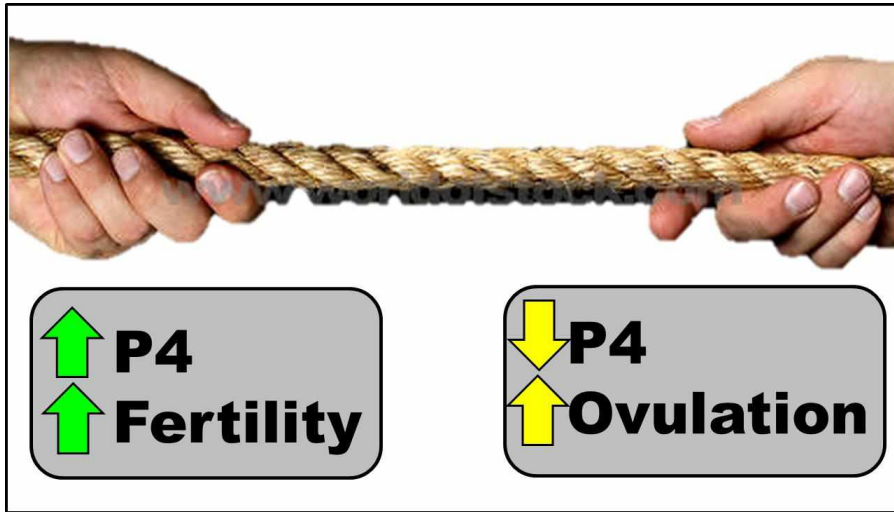


Fertility programs include presynchronization of the estrous cycle to optimize P/AI

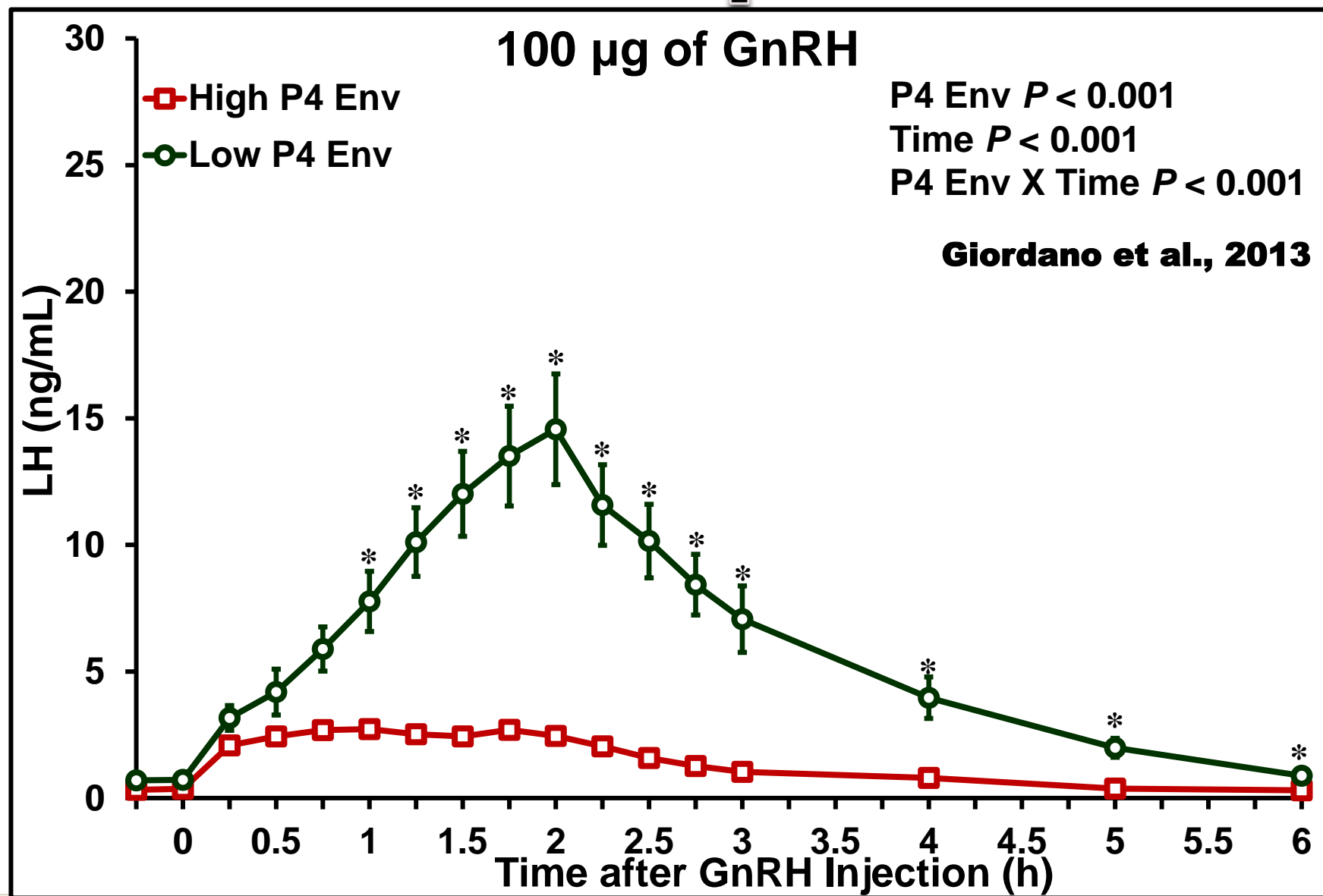
1 High P4 during fol. growth – endogenous vs. exogenous P4



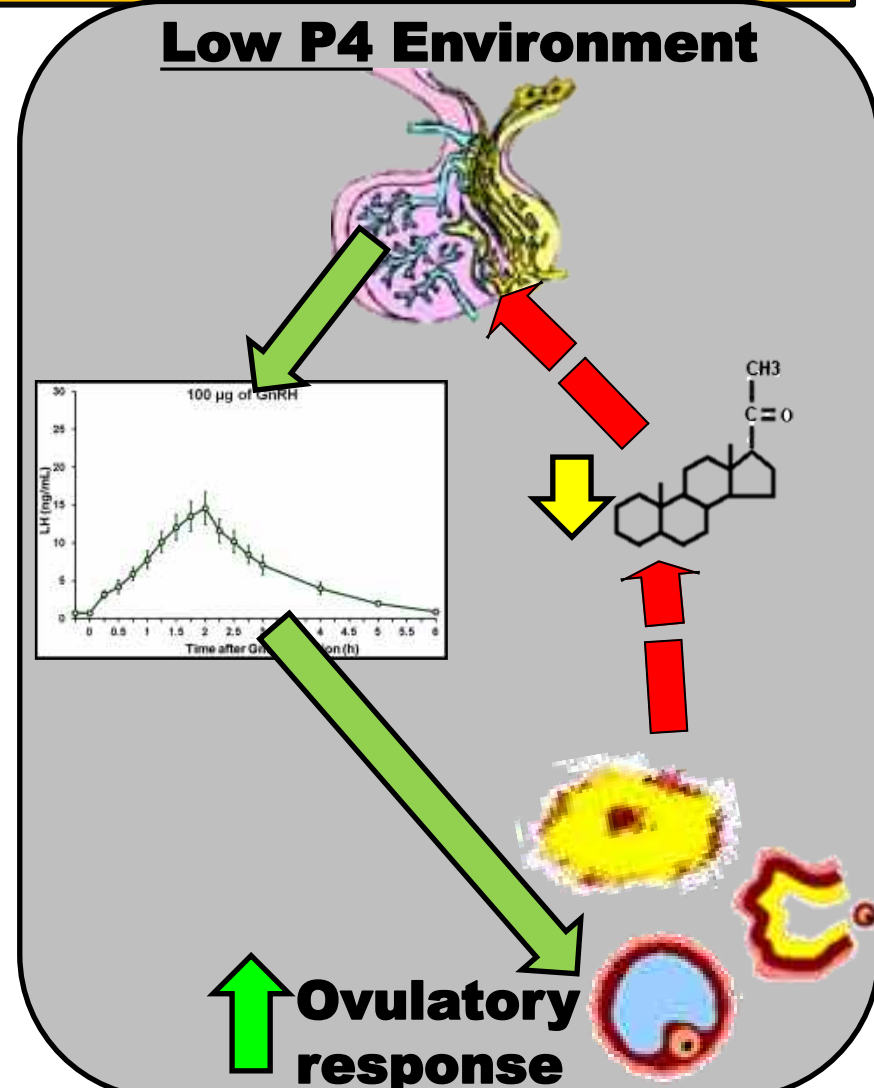
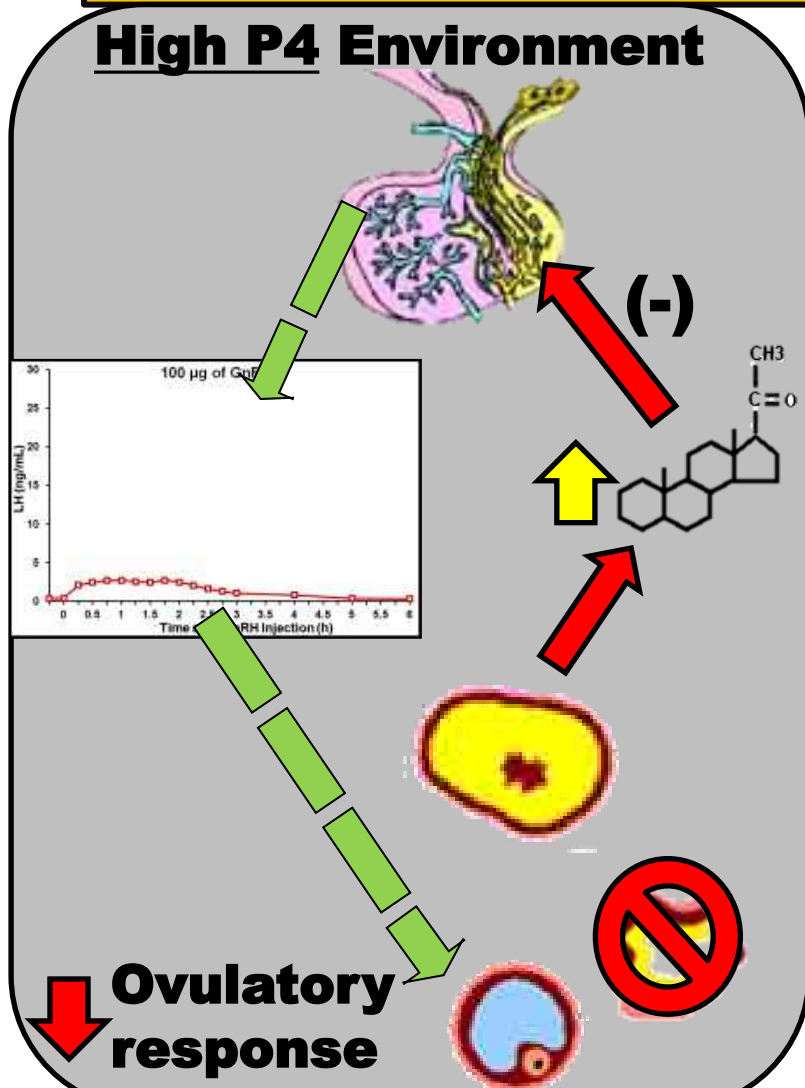
P4 levels affect ovulatory response to GnRH



Effect of P4 on LH response to GnRH



Model of P4 effect on LH release



Strategies for optimizing ovulatory response to 1st GnRH

2

Increase response to GnRH 1

Presynch
Ovsynch
PG3-G
G-6-G
hCG
GnRH

65-95% with CL
90-95% Fol \geq 10 mm

-Greater GnRH dose
-Induce partial CL regression
-hCG?

GnRH

PGF_{2α}

GnRH

TAI

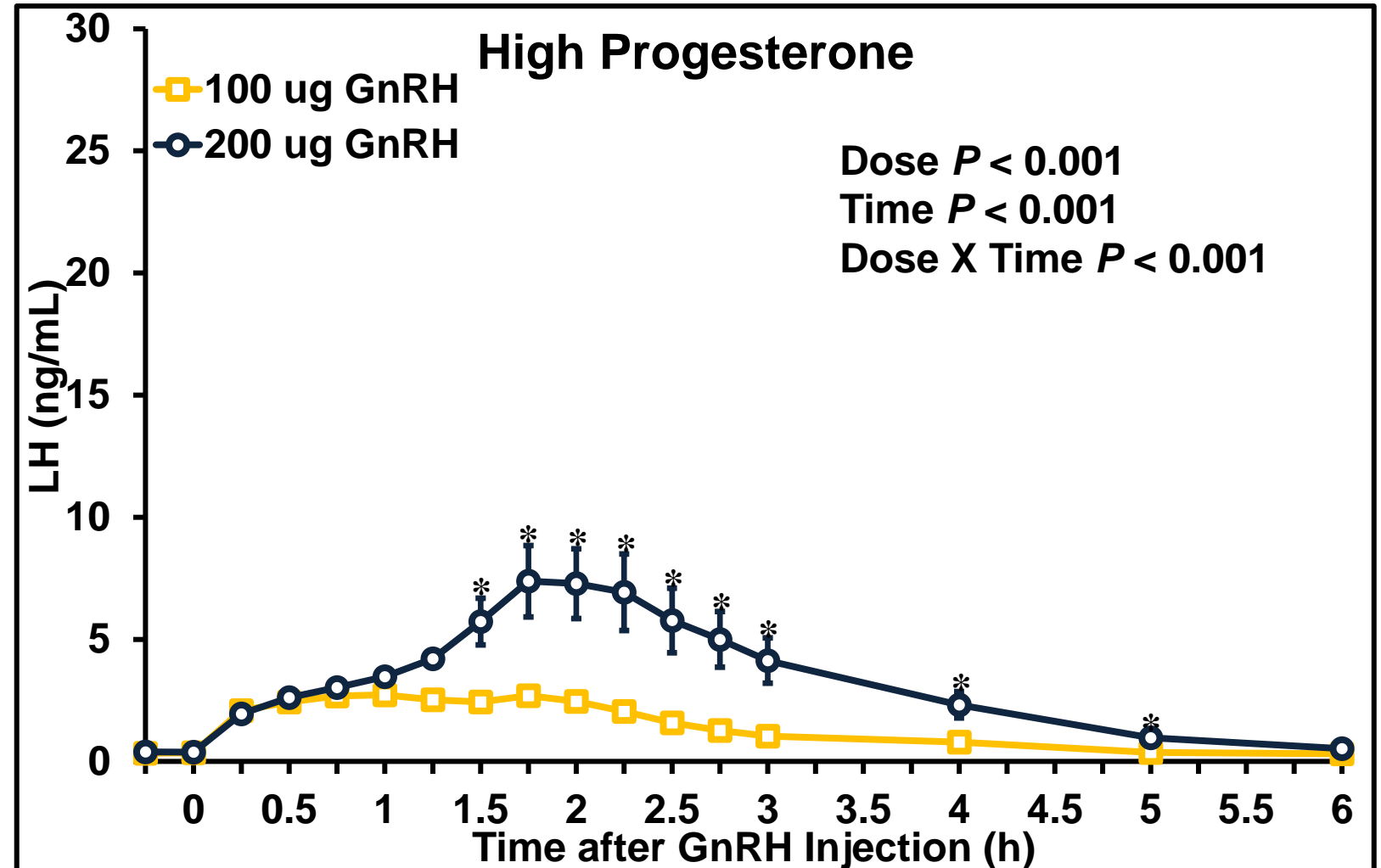
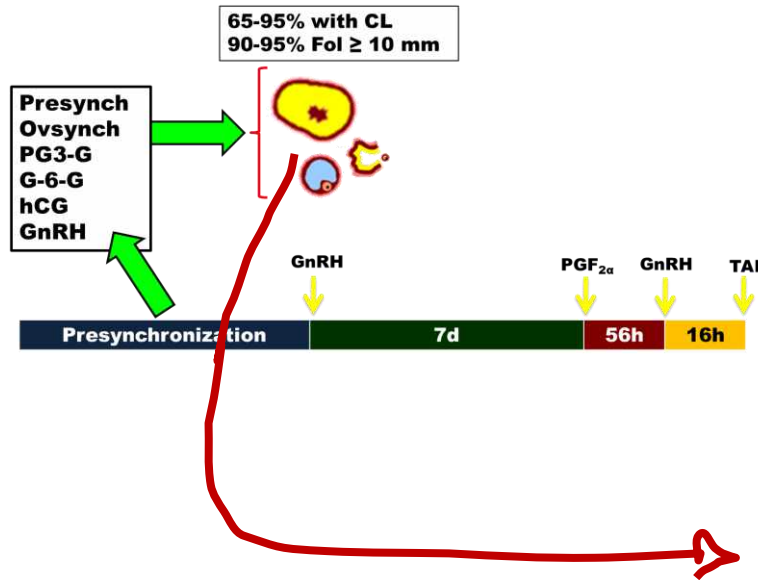
Presynchronization

7d

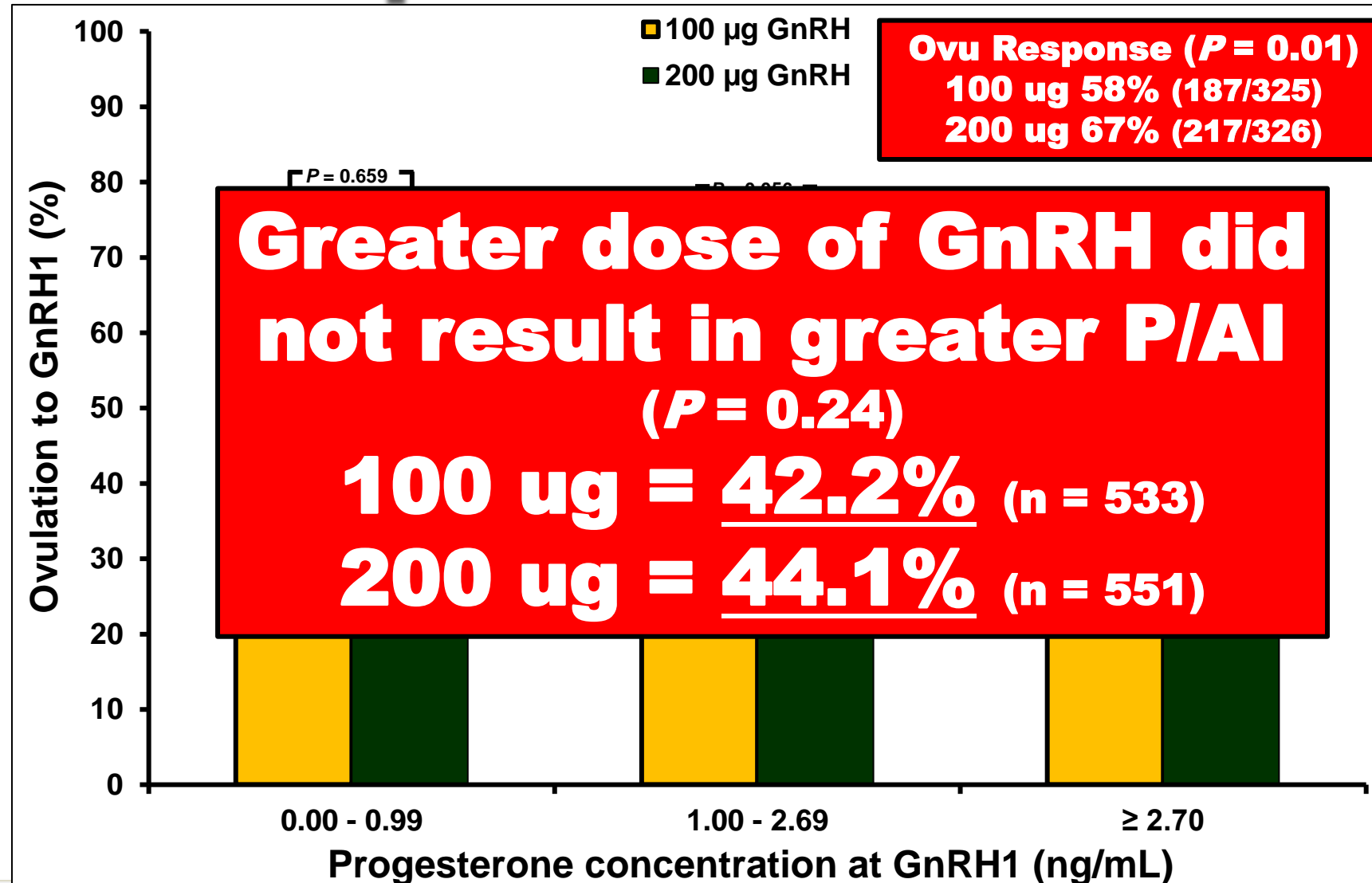
56h

16h

Greater doses of GnRH increased GnRH-induced LH surge



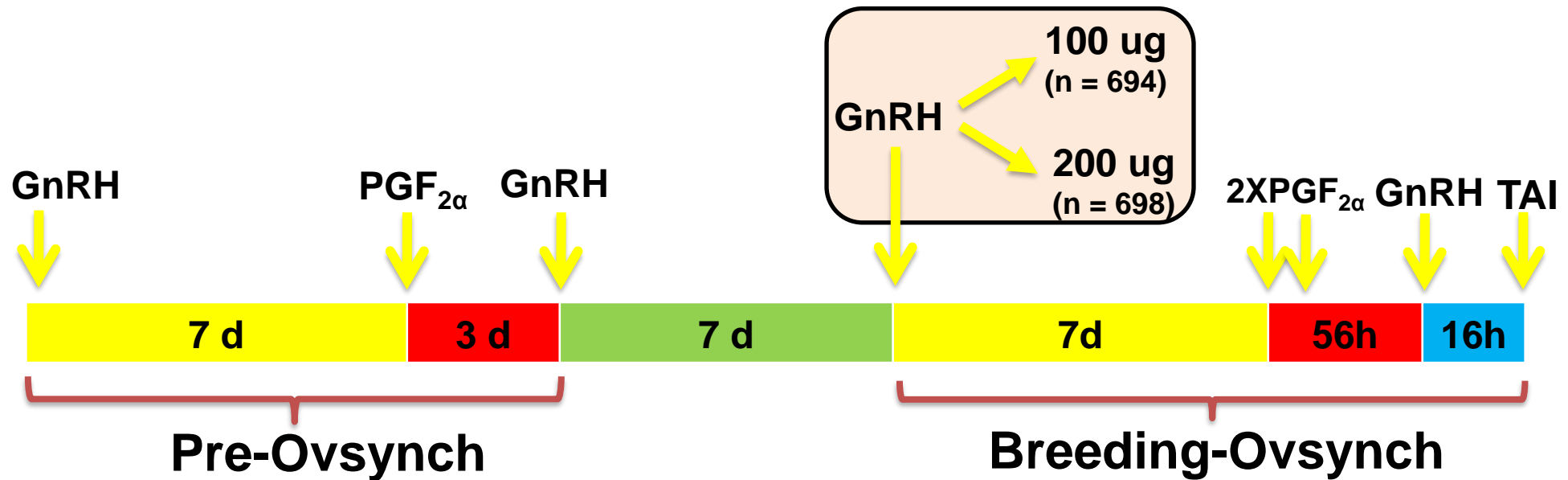
Greater GnRH dose increased ovulation in a P4 concentration dependent manner



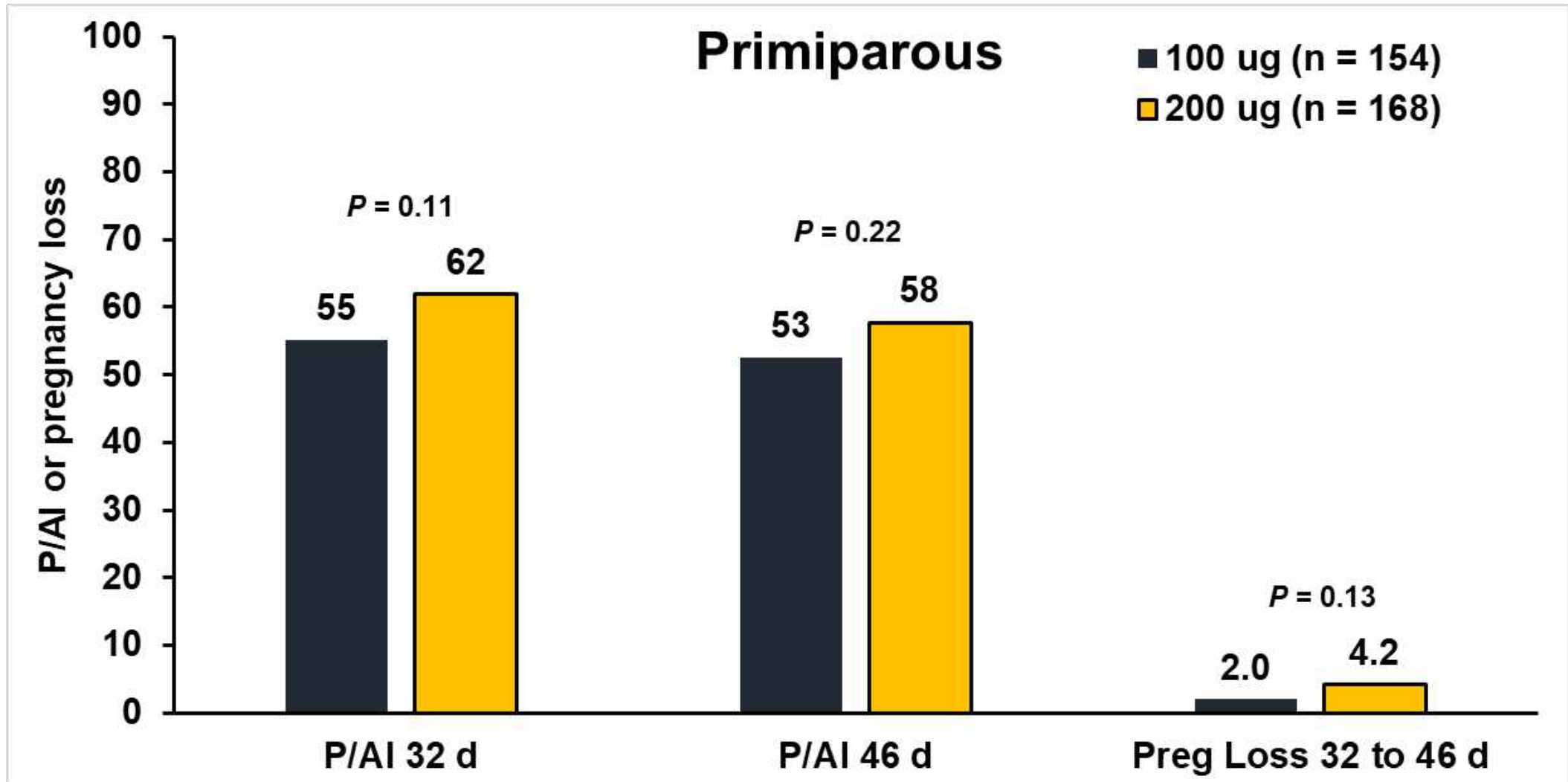
Explored effect of GnRH dose on fertility to TAI

242 Effect of a high dose of gonadorelin hydrochloride at the first gonadotropin-releasing hormone of the breeding-Ovsynch of a fertility program on ovulation rate and pregnancies per AI in first-service lactating Holstein cows. T. Valdes Arciniega*¹, I. M. R. Leão¹, E. Anta Galvan¹, T. O. Cunha¹, M. S. El Azzi^{1,2}, N. B. Cook¹, and J. P. N. Martins¹, ¹*School of Veterinary Medicine, University of Wisconsin-Madison, Madison, WI*, ²*Universidade Federal de Lavras, Lavras, MG, Brazil*.

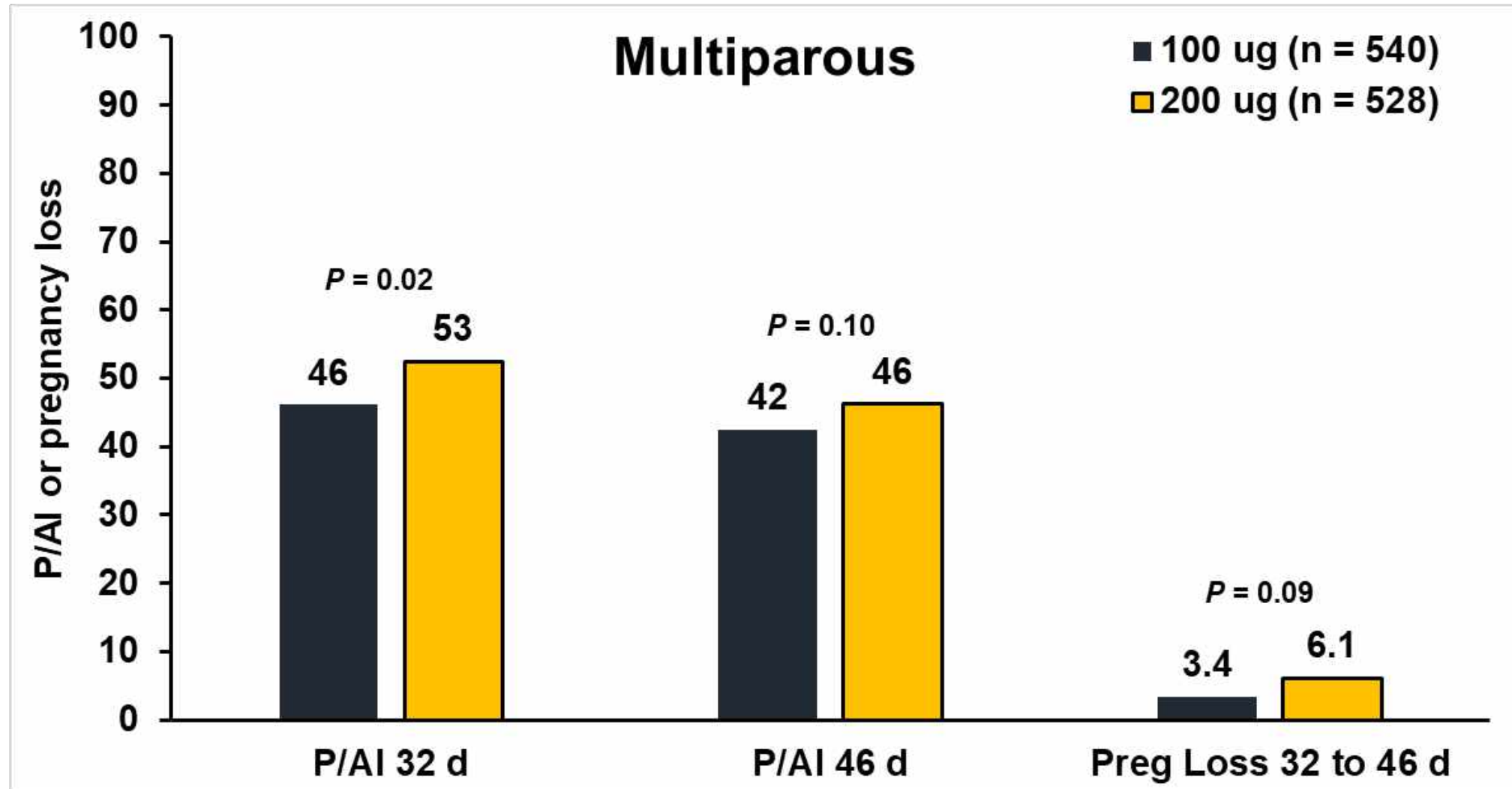
- CRD to evaluate effect of 100 vs 200 ug of **Gonadorelin hydrochloride**
- Lactating Holstein cows – 1st TAI at 64-75 primi (n = 720), 59-70 multi (n = 1,192)
- Conventional semen only



Effect of GnRH (Gonadorelin hydrochloride) dose on P/AI - Primiparous cows



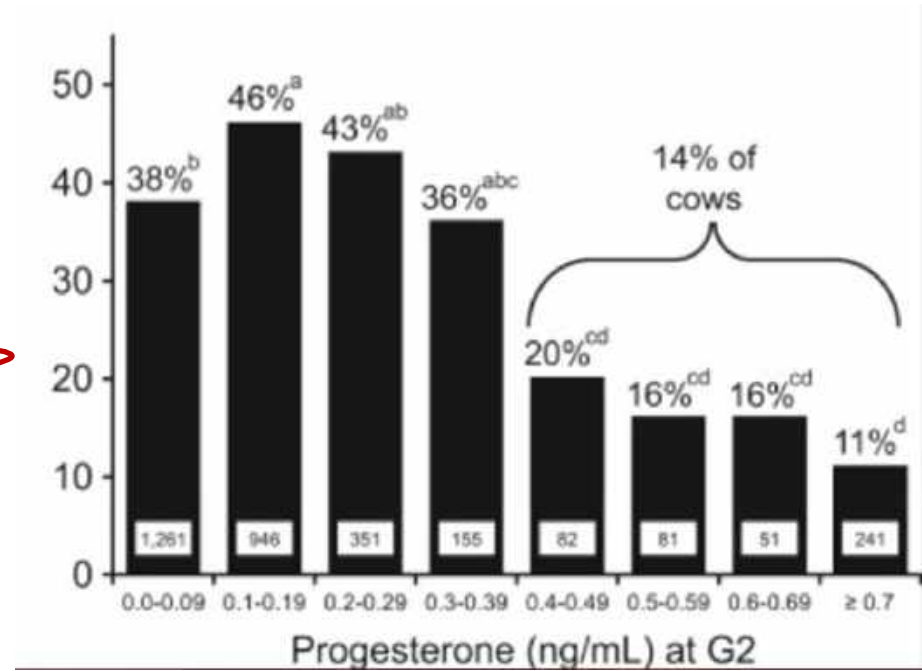
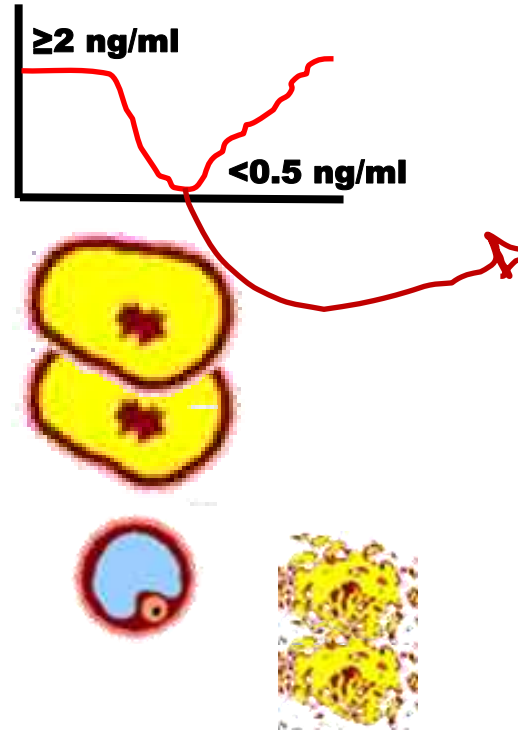
Effect of GnRH (Gonadorelin hydrochloride) dose on P/AI – Multiparous cows



Optimizing luteolysis before TAI increases fertility

3

Increase CL regression rate & minimize P4 levels



GnRH



7d

PGF_{2α}



56h

GnRH



16h

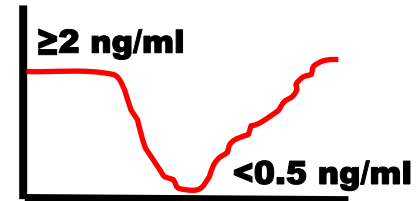
TAI



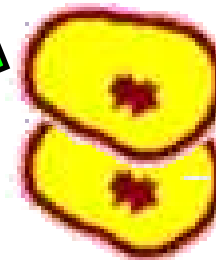
Type of CL present at induction of luteolysis affects the response to PGF

Type of CL presents affects response to PGF

-Greater PGF dose
-Sequential PGF treatments



Item	Group			P-value
	Old CL	Old+New CL	New CL only	
CL regression (<1 ng/mL)	91 ^a (47)	97 ^a (48)	81 ^b (73)	0.04



GnRH



PGF_{2α}



GnRH



TAI



7d

56h

16h

Sequential PGF treatments (two/24 h) increased CL regression risk

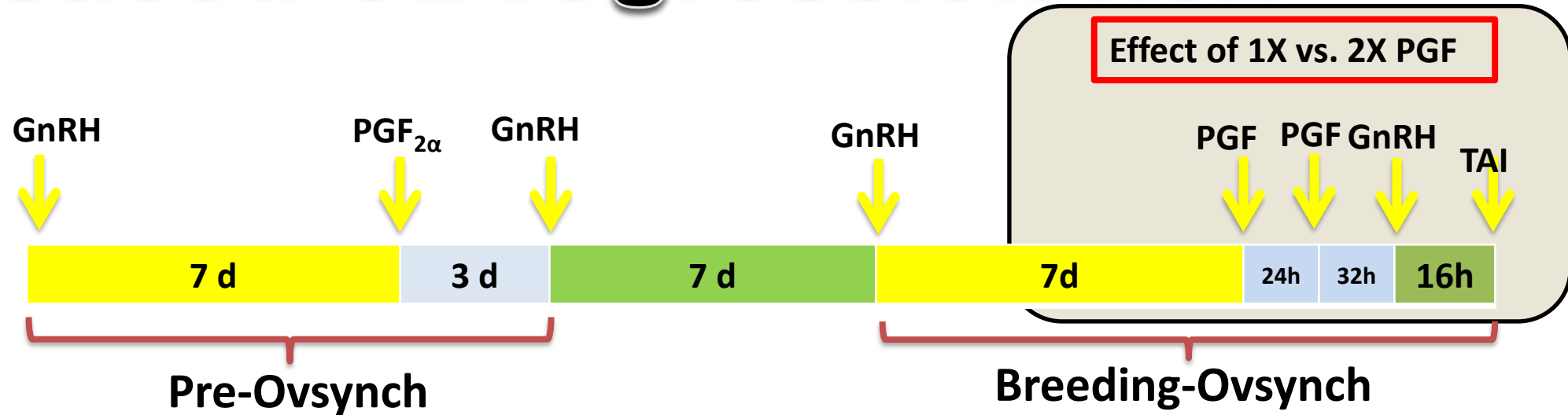


Table 1. Effect of 1 versus 2 treatments with prostaglandin F_{2α} (PGF) on percentage of cows with complete regression of the corpus luteum in primiparous and multiparous cows synchronized with Double-Ovsynch (experiment 1)

% of cows with complete CL regression ¹ (no./no.)	1 PGF	2 PGF	<i>P</i> -value
Primiparous	81.2 (65/80)	97.5 (77/79)	0.001
Multiparous	84.4 (81/96)	96.7 (86/89)	0.006
<i>P</i> -value	0.69	1.0	
Overall	83.0 (146/176)	97.0 (163/168)	0.0001

¹Circulating progesterone <0.5 ng/mL at 56 h after first PGF in cows that had ≥2.0 ng/mL of progesterone on the day of first PGF.

2X vs 1X PGF increased CL reg. ~14p.p.

Sequential PGF treatments (two/24 h) increased P/AI

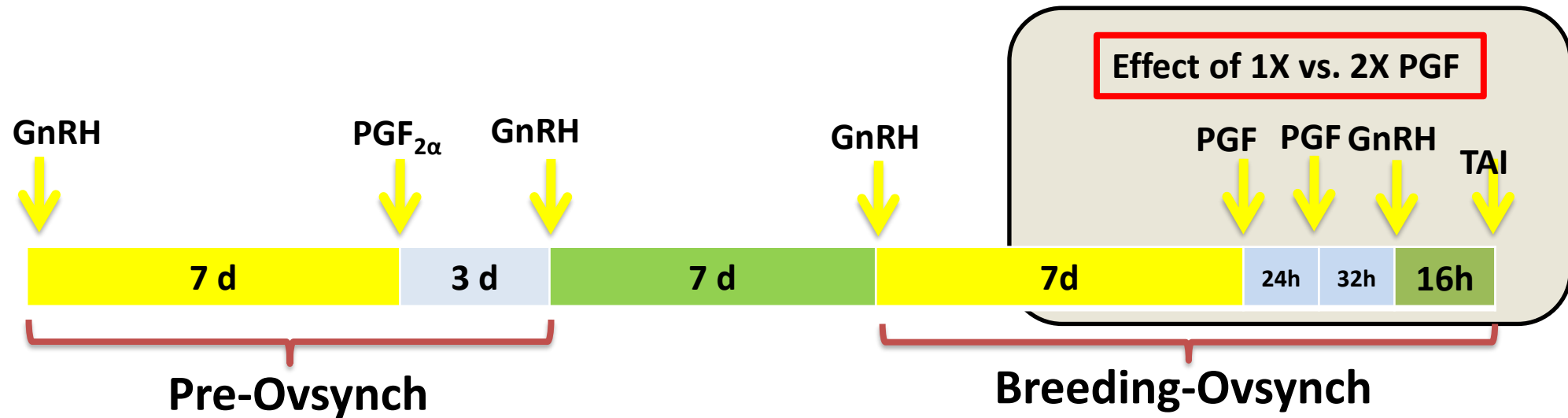


Table 6. Effect of treatment with a second prostaglandin F_{2α} (PGF) on P/AI during the Ovsynch (experiment 2) or Double-Ovsynch (experiment 1) protocols¹

Parity	1 PGF, % (no./no.)	2 PGF, % (no./no.)	Effect of PGF difference, % (<i>P</i> -value)
Primiparous	39.3 (140/356)	40.6 (139/342)	+ 3.31% (0.39)
Multiparous	32.5 (296/910)	36.5 (333/913)	+12.31% (0.043)
<i>P</i> -value	0.04	0.17	
Overall	34.4 (436/1266)	37.6 (471/1251)	+9.45% (0.049)

¹Results from experiments 1 and 2 were combined for the analysis with all cows assigned to the experiments included in the analysis.

**2X vs 1X PGF
increased P/AI
4.0 p.p.
multiparous only**

Sequential PGF treatment. (two/24 h) increased CL regression rate



J. Dairy Sci. 101:8566–8571
<https://doi.org/10.3168/jds.2017-14191>
 © American Dairy Science Association®, 2018.

Short communication: Effect of adding a second prostaglandin F_{2α} injection during the Ovsynch protocol on luteal regression and fertility in lactating dairy cows: A meta-analysis

S. Borchardt,* A. Pohl,* P. D. Carvalho,† P. M. Fricke,† and W. Heuwieser*¹

*Clinic for Animal Reproduction, Faculty of Veterinary Medicine, Freie Universität Berlin, Koenigsweg 65, 14163 Berlin, Germany

†Department of Dairy Science, University of Wisconsin, Madison 53706

Table 2. Effect of an additional treatment with PGF_{2α} during the Ovsynch protocol (n = 1,856) on luteal regression at the end of the protocol considering 6 manuscripts with a randomized controlled study design

Manuscript ¹	Luteal regression		Relative risk ²	95% CI	P-value
	1PGF	2PGF			
Barletta et al. (2018)	112/128	133/142	1.07	0.99–1.16	
Brusveen et al. (2009)	151/178	155/162	1.13	1.05–1.21	
Carvalho et al. (2015a)	262/312	281/288	1.16	1.10–1.22	
Heidari et al. (2017)	28/50	35/50	1.25	0.92–1.70	
Santos et al. (2016)	89/100	100/102	1.10	1.02–1.19	
Wiltbank et al. (2015)	146/176	163/168	1.17	1.09–1.26	
$I^2 = 0.00\%$ ($P = 0.450$)					
Total (fixed effects)	788/944	867/912	1.14	1.10–1.17	0.001
Total (random effects)	788/944	867/912	1.13	1.10–1.17	0.001
Pooled proportion (%)	83.5	95.1			

**Meta-analysis:
2X vs 1X PGF
increased CL
reg. ~12 p.p.**

¹ I^2 = proportion of total variation of effect size estimates that is due to heterogeneity.

²Relative risk for having a blood progesterone concentration below a certain threshold at the end of the Ovsynch protocol using a single PGF_{2α} treatment (1PGF) compared with 2 PGF_{2α} treatments (2PGF) during the Ovsynch protocol.

Sequential PGF treatment. (two/24 h) increased P/AI



J. Dairy Sci. 101:8566–8571
<https://doi.org/10.3168/jds.2017-14191>
 © American Dairy Science Association®, 2018.

Short communication: Effect of adding a second prostaglandin F_{2α} injection during the Ovsynch protocol on luteal regression and fertility in lactating dairy cows: A meta-analysis

S. Borchardt,* A. Pohl,* P. D. Carvalho,† P. M. Fricke,† and W. Heuwieser*¹
 *Clinic for Animal Reproduction, Faculty of Veterinary Medicine, Freie Universität Berlin, Koenigschweg 65, 14163 Berlin, Germany
 †Department of Dairy Science, University of Wisconsin, Madison 53706

Table 3. Effect of an additional treatment with PGF_{2α} during the Ovsynch protocol (n = 5,356) on pregnancy per AI considering 6 manuscripts with a randomized controlled study design

Manuscript ¹	Pregnancy per AI		Relative risk ²	95% CI	P-value
	1PGF	2PGF			
Barletta et al. (2018)	107/349	137/387	1.15	0.94–1.49	
Brusveen et al. (2009)	78/197	88/182	1.22	0.9	
Carvalho et al. (2015a)	150/462	168/435	1.19	1.0	
Heidari et al. (2017)	49/149	54/144	1.14	0.8	
Santos et al. (2016)	95/266	111/268	1.16	0.9	
Wiltbank et al. (2015)	436/1,266	471/1,251	1.09	0.9	
$I^2 = 0.00\%$ ($P = 0.942$)					
Total (fixed effects)	915/2,689	1,029/2,667	1.14	1.0	
Total (random effects)	915/2,689	1,029/2,667	1.14	1.0	
Pooled proportion (%)	34.0	38.6			

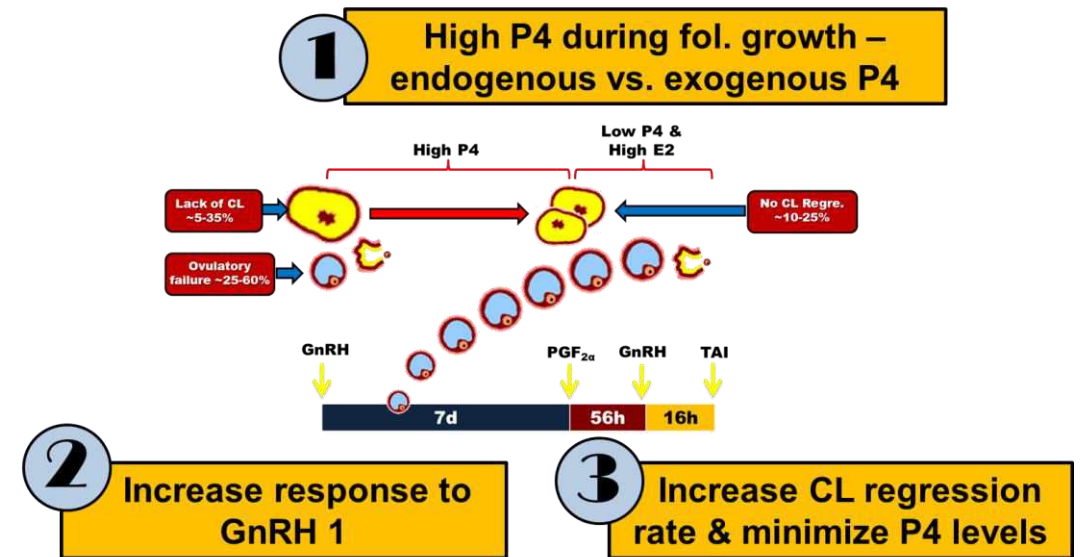
**Meta-analysis:
2X vs 1X PGF
increased P/AI
~4.6 p.p.**

¹ I^2 = proportion of total variation of effect size estimates that is due to heterogeneity.

²Relative risk for conceiving at timed AI using a single PGF_{2α} treatment (1PGF) compared with 2 PGF_{2α} treatments (2PGF) during the Ovsynch protocol.

Summary for strategies for optimizing TAI programs for dairy cows

🐄 **Endocrine status and stage of ovarian structure development** at the time of key hormonal treatments **affects the response** to individual treatments and thus, whole protocol



🐄 **Equivocal evidence** to support **increasing dose of GnRH** at beginning of breeding-Ovsynch to improve P/AI – effects might analog or salt dependent

🐄 **Supportive evidence** for giving **two doses of PGF 24 h apart** and **growing evidence** that a **double PGF** dose before TAI might improve P/AI – effects might be **parity specific**

Acknowledgement



Cornell University
College of Agriculture and Life Sciences

Dairy Cattle Biology & Management Laboratory



United States Department of Agriculture
National Institute of Food and Agriculture

This work was supported by the **USDA National Institute of Food and Agriculture**, Animal Health Program **Project # 2017-67015-26772**, **Hatch project NYC-2020-21-255**, and **Multistate project 1021189**. Any opinions, findings, conclusions, or recommendations expressed in this publication are those of the author(s) and do not necessarily reflect the view of the National Institute of Food and Agriculture (NIFA) or the United States Department of Agriculture(USDA)".



Commercial dairy farms



Thank You! Questions?

